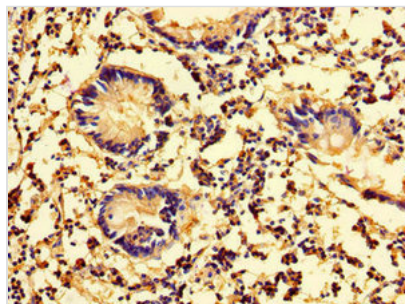




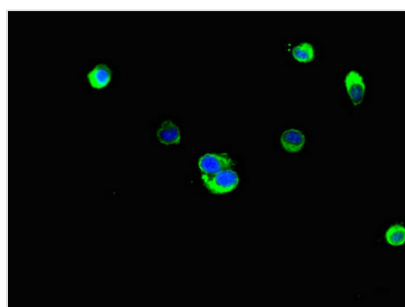
LXN Antibody

Product Code	CSB-PA013240LA01HU
Storage	Upon receipt, store at -20°C or -80°C. Avoid repeated freeze.
Uniprot No.	Q9BS40
Immunogen	Recombinant Human Latexin protein (1-216AA)
Raised In	Rabbit
Species Reactivity	Human
Tested Applications	ELISA, IHC, IF; Recommended dilution: IHC:1:20-1:200, IF:1:50-1:200
Form	Liquid
Conjugate	Non-conjugated
Storage Buffer	Preservative: 0.03% Proclin 300 Constituents: 50% Glycerol, 0.01M PBS, PH 7.4
Purification Method	>95%, Protein G purified
Isotype	IgG
Clonality	Polyclonal
Alias	Latexin (Endogenous carboxypeptidase inhibitor) (ECI) (Protein MUM) (Tissue carboxypeptidase inhibitor) (TCI), LXN
Immunogen Species	Homo sapiens (Human)
Research Area	Immunology
Target Names	LXN

Image



Immunohistochemistry of paraffin-embedded human appendix tissue using CSB-PA013240LA01HU at dilution of 1:100



Immunofluorescent analysis of HeLa cells using CSB-PA013240LA01HU at dilution of 1:100 and Alexa Fluor 488-conjugated AffiniPure Goat Anti-Rabbit IgG(H+L)



Usage

For Research Use Only. Not for use in diagnostic or therapeutic procedures.