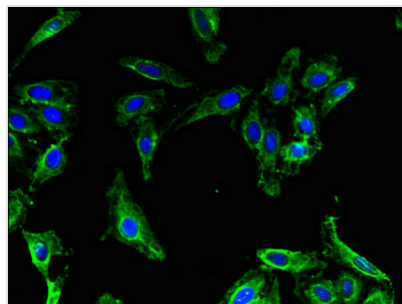




MAP1LC3B2 Antibody

Product Code	CSB-PA013404LA01HU
Storage	Upon receipt, store at -20°C or -80°C. Avoid repeated freeze.
Uniprot No.	A6NCE7
Immunogen	Recombinant Human Microtubule-associated proteins 1A/1B light chain 3 beta 2 protein (1-47AA)
Raised In	Rabbit
Species Reactivity	Human
Tested Applications	ELISA, IF; Recommended dilution: IF:1:50-1:200
Form	Liquid
Conjugate	Non-conjugated
Storage Buffer	Preservative: 0.03% Proclin 300 Constituents: 50% Glycerol, 0.01M PBS, PH 7.4
Purification Method	>95%, Protein G purified
Isotype	IgG
Clonality	Polyclonal
Alias	Microtubule-associated proteins 1A/1B light chain 3 beta 2 (Microtubule-associated proteins 1A/1B light chain 3B-like), MAP1LC3B2
Immunogen Species	Homo sapiens (Human)
Research Area	Others
Target Names	MAP1LC3B2

Image



Immunofluorescent analysis of HeLa cells using CSB-PA013404LA01HU at dilution of 1:100 and Alexa Fluor 488-conjugated AffiniPure Goat Anti-Rabbit IgG(H+L)

Usage

For Research Use Only. Not for use in diagnostic or therapeutic procedures.