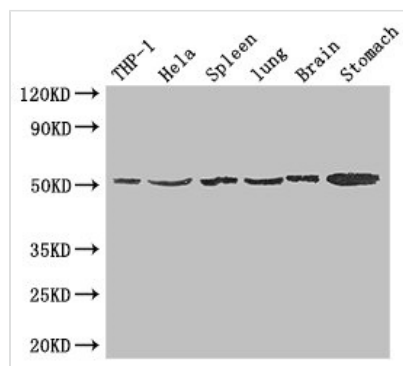




MSR1 Antibody

| | |
|----------------------------|---|
| Product Code | CSB-PA015050LA01HU |
| Storage | Upon receipt, store at -20°C or -80°C. Avoid repeated freeze. |
| Uniprot No. | P21757 |
| Immunogen | Recombinant Human Macrophage scavenger receptor types I and II protein (271-446AA) |
| Raised In | Rabbit |
| Species Reactivity | Human, Mouse |
| Tested Applications | ELISA, WB, IHC; Recommended dilution: WB:1:2000-1:10000, IHC:1:20-1:200 |
| Form | Liquid |
| Conjugate | Non-conjugated |
| Storage Buffer | Preservative: 0.03% Proclin 300 Constituents: 50% Glycerol, 0.01M PBS, PH 7.4 |
| Purification Method | >95%, Protein G purified |
| Isotype | IgG |
| Clonality | Polyclonal |
| Alias | Macrophage scavenger receptor types I and II (Macrophage acetylated LDL receptor I and II) (Scavenger receptor class A member 1) (CD antigen CD204), MSR1, SCARA1 |
| Immunogen Species | Homo sapiens (Human) |
| Research Area | Immunology |
| Target Names | MSR1 |

Image



Western Blot

Positive WB detected in: THP-1 whole cell lysate, Hela whole cell lysate, Mouse spleen tissue, Mouse lung tissue, Mouse brain tissue, Mouse stomach tissue

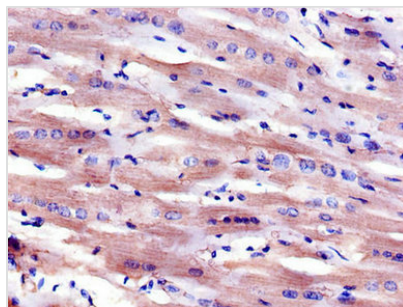
All lanes: MSR1 antibody at 1.5µg/ml

Secondary

Goat polyclonal to rabbit IgG at 1/50000 dilution

Predicted band size: 50, 40, 43 kDa

Observed band size: 50 kDa



Immunohistochemistry of paraffin-embedded human heart tissue using CSB-PA015050LA01HU at dilution of 1:100