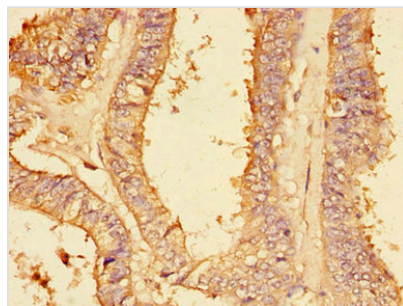




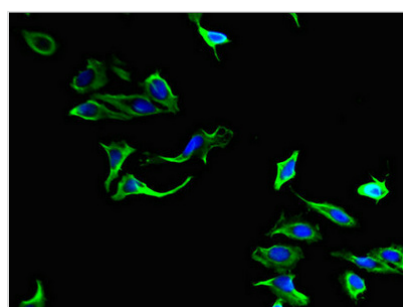
PLA2G4A Antibody

Product Code	CSB-PA018097LA01HU
Storage	Upon receipt, store at -20°C or -80°C. Avoid repeated freeze.
Uniprot No.	P47712
Immunogen	Recombinant Human Cytosolic phospholipase A2 protein (379-533AA)
Raised In	Rabbit
Species Reactivity	Human
Tested Applications	ELISA, IHC, IF; Recommended dilution: IHC:1:20-1:200, IF:1:50-1:200
Form	Liquid
Conjugate	Non-conjugated
Storage Buffer	Preservative: 0.03% Proclin 300 Constituents: 50% Glycerol, 0.01M PBS, PH 7.4
Purification Method	>95%, Protein G purified
Isotype	IgG
Clonality	Polyclonal
Alias	Cytosolic phospholipase A2 (cPLA2) (Phospholipase A2 group IVA) [Includes: Phospholipase A2 (EC 3.1.1.4) (Phosphatidylcholine 2-acylhydrolase); Lysophospholipase (EC 3.1.1.5)], PLA2G4A, CPLA2 PLA2G4
Immunogen Species	Homo sapiens (Human)
Research Area	Immunology
Target Names	PLA2G4A

Image



Immunohistochemistry of paraffin-embedded human endometrial cancer using CSB-PA018097LA01HU at dilution of 1:100



Immunofluorescent analysis of HeLa cells using CSB-PA018097LA01HU at dilution of 1:100 and Alexa Fluor 488-conjugated AffiniPure Goat Anti-Rabbit IgG(H+L)



Usage

For Research Use Only. Not for use in diagnostic or therapeutic procedures.