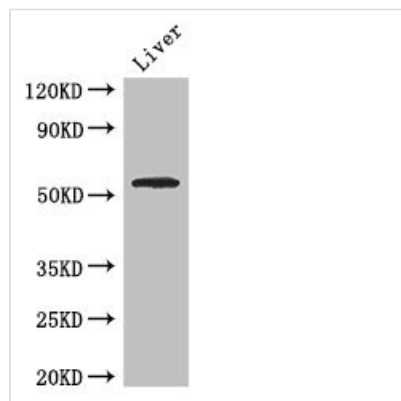




SLC18A1 Antibody

Product Code	CSB-PA021426LA01HU
Storage	Upon receipt, store at -20°C or -80°C. Avoid repeated freeze.
Uniprot No.	P54219
Immunogen	Recombinant Human Chromaffin granule amine transporter protein (66-120AA)
Raised In	Rabbit
Species Reactivity	Human, Mouse
Tested Applications	ELISA, WB, IHC; Recommended dilution: WB:1:1000-1:5000, IHC:1:20-1:200
Form	Liquid
Conjugate	Non-conjugated
Storage Buffer	Preservative: 0.03% Proclin 300 Constituents: 50% Glycerol, 0.01M PBS, PH 7.4
Purification Method	>95%, Protein G purified
Isotype	IgG
Clonality	Polyclonal
Alias	Chromaffin granule amine transporter (Solute carrier family 18 member 1) (Vesicular amine transporter 1) (VAT1), SLC18A1, VAT1 VMAT1
Immunogen Species	Homo sapiens (Human)
Research Area	Neuroscience
Target Names	SLC18A1

Image



Western Blot

Positive WB detected in: Mouse liver tissue

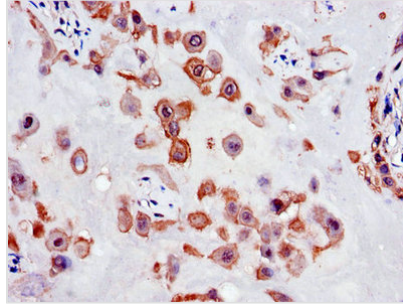
All lanes: SLC18A1 antibody at 2.7µg/ml

Secondary

Goat polyclonal to rabbit IgG at 1/50000 dilution

Predicted band size: 57, 51, 53 kDa

Observed band size: 57 kDa



Immunohistochemistry of paraffin-embedded human placenta tissue using CSB-PA021426LA01HU at dilution of 1:100

Usage

For Research Use Only. Not for use in diagnostic or therapeutic procedures.