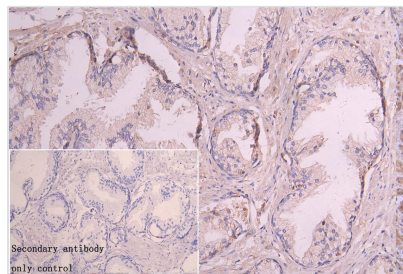




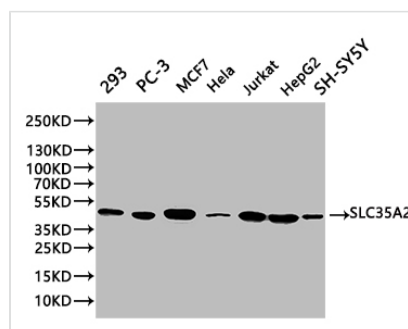
SLC35A2 Antibody

Product Code	CSB-PA021584LA01HU
Storage	Upon receipt, store at -20°C or -80°C. Avoid repeated freeze.
Uniprot No.	P78381
Immunogen	Synthesized peptide derived from human SLC35A2
Raised In	Rabbit
Species Reactivity	Human, Mouse, Rat
Tested Applications	ELISA, WB, IHC; Recommended dilution: WB:1:1000-1:3000, IHC:1:100-1:300
Form	Liquid
Storage Buffer	Liquid in PBS containing 50% glycerol, 0.5% BSA and 0.02% sodium azide.
Purification Method	Antigen affinity purification
Isotype	IgG
Clonality	Polyclonal
Product Type	Polyclonal Antibody
Immunogen Species	Homo sapiens (Human)
Research Area	Others
Target Names	SLC35A2

Image



IHC image of CSB-PA021584LA01HU diluted at 1:150 and staining in paraffin-embedded human prostate cancer performed on a Leica Bond™ system. After dewaxing and hydration, antigen retrieval was mediated by high pressure in a citrate buffer (pH 6.0). Section was blocked with 10% normal goat serum 30min at RT. Then primary antibody (1% BSA) was incubated at 4°C overnight. The primary is detected by a Goat anti-rabbit polymer IgG labeled by HRP and visualized using 0.05% DAB. Secondary antibody only control: uses 1% BSA instead of primary antibody

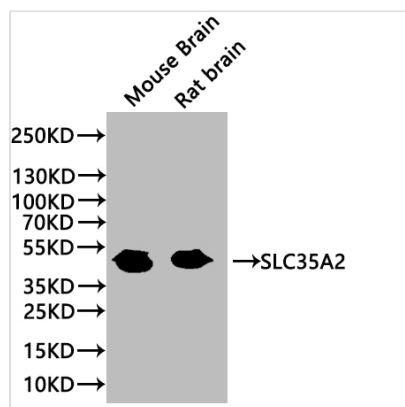


Western Blot

Positive WB detected in: 293 whole cell lysate, PC-3 whole cell lysate, MCF7 whole cell lysate, HeLa whole cell lysate, Jurkat whole cell lysate, HepG2 whole cell lysate, SH-SY5Y whole cell lysate All lanes: SLC35A2 Antibody at 1:1000

Secondary

Goat polyclonal to rabbit IgG at 1/50000 dilution
 Predicted band size: 41 kDa
 Observed band size: 41 kDa

**Western Blot**

Positive WB detected in: Mouse Brain tissue lysate, Rat Brain tissue lysate

All lanes: SLC35A2 Antibody at 1:1000

Secondary

Goat polyclonal to rabbit IgG at 1/50000 dilution

Predicted band size: 41 kDa

Observed band size: 41 kDa

Usage

For Research Use Only. Not for use in diagnostic or therapeutic procedures.