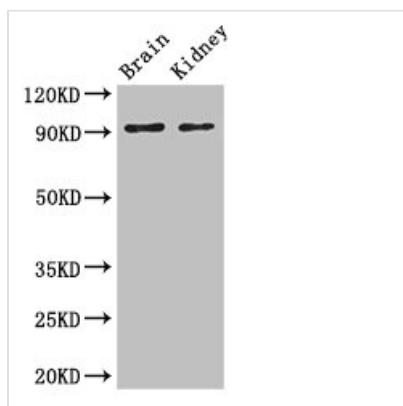




SLC9A1 Antibody

Product Code	CSB-PA021726LA01HU
Storage	Upon receipt, store at -20°C or -80°C. Avoid repeated freeze.
Uniprot No.	P19634
Immunogen	Recombinant Human Sodium/hydrogen exchanger 1 protein (36-102AA)
Raised In	Rabbit
Species Reactivity	Human, Mouse
Tested Applications	ELISA, WB, IHC, IF; Recommended dilution: WB:1:2000-1:5000, IHC:1:20-1:200, IF:1:50-1:200
Form	Liquid
Conjugate	Non-conjugated
Storage Buffer	Preservative: 0.03% Proclin 300 Constituents: 50% Glycerol, 0.01M PBS, PH 7.4
Purification Method	>95%, Protein G purified
Isotype	IgG
Clonality	Polyclonal
Alias	Sodium/hydrogen exchanger 1 (APNH) (Na(+)/H(+)) antiporter, amiloride-sensitive) (Na(+)/H(+)) exchanger 1) (NHE-1) (Solute carrier family 9 member 1), SLC9A1, APNH1 NHE1
Immunogen Species	Homo sapiens (Human)
Research Area	Signal Transduction
Target Names	SLC9A1

Image



Western Blot

Positive WB detected in: Mouse brain tissue, Mouse kidney tissue

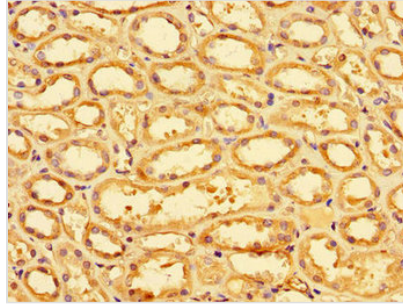
All lanes: SLC9A1 antibody at 3µg/ml

Secondary

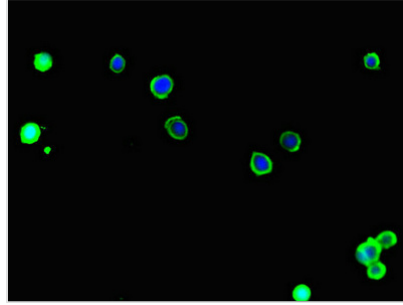
Goat polyclonal to rabbit IgG at 1/50000 dilution

Predicted band size: 91, 62 kDa

Observed band size: 91 kDa



Immunohistochemistry of paraffin-embedded human kidney tissue using CSB-PA021726LA01HU at dilution of 1:100



Immunofluorescent analysis of MCF-7 cells using CSB-PA021726LA01HU at dilution of 1:100 and Alexa Fluor 488-conjugated AffiniPure Goat Anti-Rabbit IgG(H+L)

Usage

For Research Use Only. Not for use in diagnostic or therapeutic procedures.