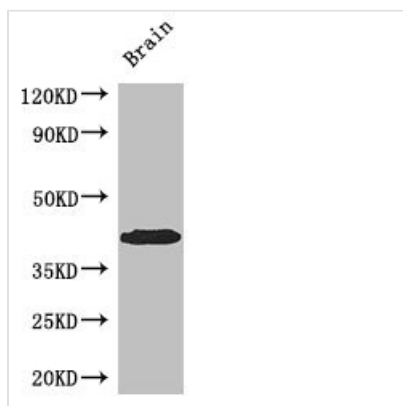




SPDEF Antibody

Product Code	CSB-PA022518LA01HU
Storage	Upon receipt, store at -20°C or -80°C. Avoid repeated freeze.
Uniprot No.	O95238
Immunogen	Recombinant Human SAM pointed domain-containing Ets transcription factor protein (145-247AA)
Raised In	Rabbit
Species Reactivity	Human, Mouse
Tested Applications	ELISA, WB, IHC; Recommended dilution: WB:1:1000-1:5000, IHC:1:20-1:200
Form	Liquid
Conjugate	Non-conjugated
Storage Buffer	Preservative: 0.03% Proclin 300 Constituents: 50% Glycerol, 0.01M PBS, PH 7.4
Purification Method	>95%, Protein G purified
Isotype	IgG
Clonality	Polyclonal
Alias	SAM pointed domain-containing Ets transcription factor (Prostate epithelium-specific Ets transcription factor) (Prostate-specific Ets) (Prostate-derived Ets factor), SPDEF, PDEF PSE
Immunogen Species	Homo sapiens (Human)
Research Area	Epigenetics and Nuclear Signaling
Target Names	SPDEF

Image



Western Blot

Positive WB detected in: Mouse brain tissue

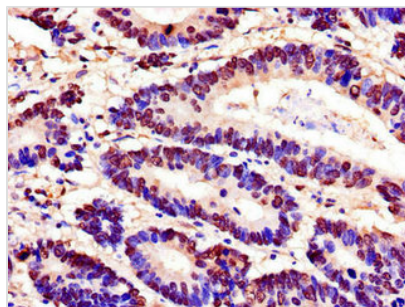
All lanes: SPDEF antibody at 3µg/ml

Secondary

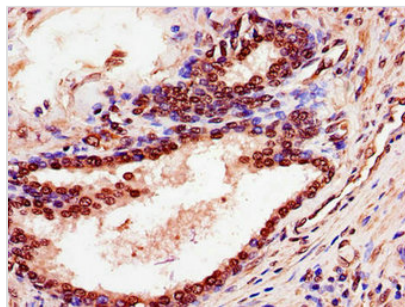
Goat polyclonal to rabbit IgG at 1/50000 dilution

Predicted band size: 38, 36 kDa

Observed band size: 38 kDa



Immunohistochemistry of paraffin-embedded human colon cancer using CSB-PA022518LA01HU at dilution of 1:100



Immunohistochemistry of paraffin-embedded human prostate cancer using CSB-PA022518LA01HU at dilution of 1:100

Usage

For Research Use Only. Not for use in diagnostic or therapeutic procedures.