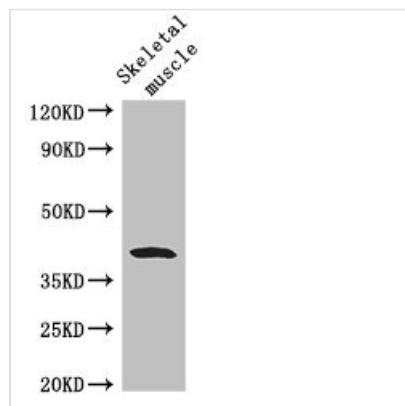




WISP1 Antibody

Product Code	CSB-PA026119LA01HU
Storage	Upon receipt, store at -20°C or -80°C. Avoid repeated freeze.
Uniprot No.	O95388
Immunogen	Recombinant Human WNT1-inducible-signaling pathway protein 1 protein (130-251AA)
Raised In	Rabbit
Species Reactivity	Human, Mouse
Tested Applications	ELISA, WB, IHC, IF; Recommended dilution: WB:1:1000-1:5000, IHC:1:20-1:200, IF:1:50-1:200
Form	Liquid
Conjugate	Non-conjugated
Storage Buffer	Preservative: 0.03% Proclin 300 Constituents: 50% Glycerol, 0.01M PBS, PH 7.4
Purification Method	>95%, Protein G purified
Isotype	IgG
Clonality	Polyclonal
Alias	WNT1-inducible-signaling pathway protein 1 (WISP-1) (CCN family member 4) (Wnt-1-induced secreted protein), WISP1, CCN4
Immunogen Species	Homo sapiens (Human)
Research Area	Epigenetics and Nuclear Signaling
Target Names	WISP1

Image



Western Blot

Positive WB detected in: Mouse skeletal muscle tissue

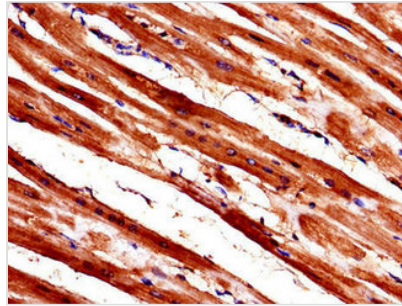
All lanes: WISP1 antibody at 2.8µg/ml

Secondary

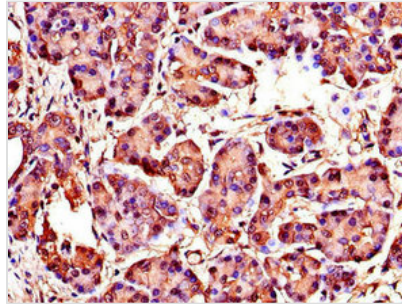
Goat polyclonal to rabbit IgG at 1/50000 dilution

Predicted band size: 41, 31, 14, 17, 22 kDa

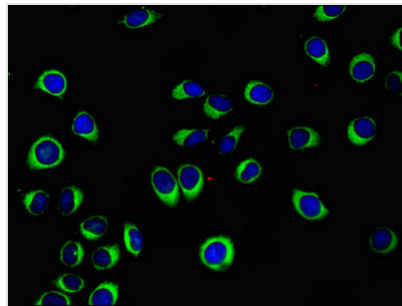
Observed band size: 41 kDa



Immunohistochemistry of paraffin-embedded human heart tissue using CSB-PA026119LA01HU at dilution of 1:100



Immunohistochemistry of paraffin-embedded human pancreatic tissue using CSB-PA026119LA01HU at dilution of 1:100



Immunofluorescent analysis of A549 cells using CSB-PA026119LA01HU at dilution of 1:100 and Alexa Fluor 488-conjugated AffiniPure Goat Anti-Rabbit IgG(H+L)