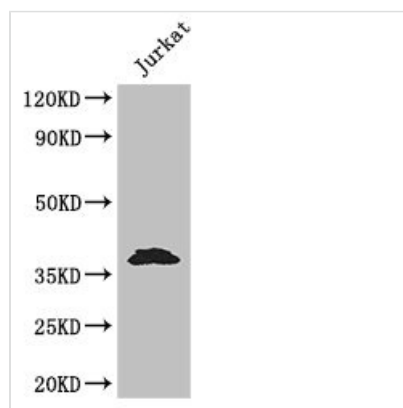




MCL1 Antibody

Product Code	CSB-PA03829A0Rb
Storage	Upon receipt, store at -20°C or -80°C. Avoid repeated freeze.
Uniprot No.	Q07820
Immunogen	Recombinant Human Induced myeloid leukemia cell differentiation protein Mcl-1 protein (19-244AA)
Raised In	Rabbit
Species Reactivity	Human
Tested Applications	ELISA, WB, IHC, IF; Recommended dilution: WB:1:1000-1:5000, IHC:1:20-1:200, IF:1:50-1:200
Form	Liquid
Conjugate	Non-conjugated
Storage Buffer	Preservative: 0.03% Proclin 300 Constituents: 50% Glycerol, 0.01M PBS, PH 7.4
Purification Method	>95%, Protein G purified
Isotype	IgG
Clonality	Polyclonal
Alias	Induced myeloid leukemia cell differentiation protein Mcl-1 (Bcl-2-like protein 3) (Bcl2-L-3) (Bcl-2-related protein EAT/mcl1) (mcl1/EAT), MCL1, BCL2L3
Immunogen Species	Homo sapiens (Human)
Research Area	Cell Biology
Target Names	MCL1

Image



Western Blot

Positive WB detected in: Jurkat whole cell lysate

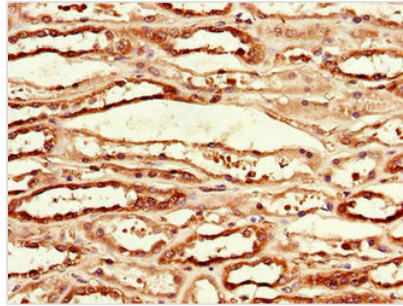
All lanes: MCL1 antibody at 3.2µg/ml

Secondary

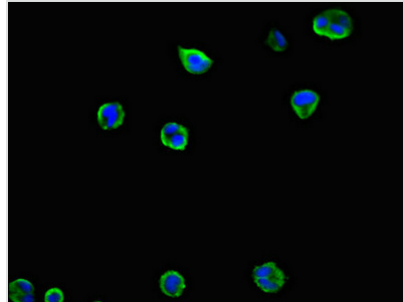
Goat polyclonal to rabbit IgG at 1/50000 dilution

Predicted band size: 38, 29 kDa

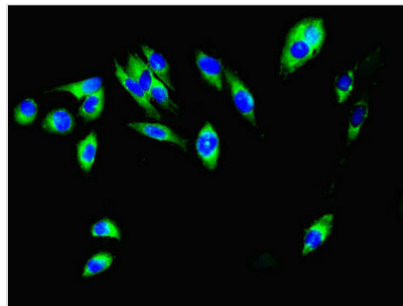
Observed band size: 38 kDa



Immunohistochemistry of paraffin-embedded human kidney tissue using CSB-PA03829A0Rb at dilution of 1:100



Immunofluorescent analysis of MCF-7 cells using CSB-PA03829A0Rb at dilution of 1:100 and Alexa Fluor 488-conjugated AffiniPure Goat Anti-Rabbit IgG(H+L)



Immunofluorescent analysis of HeLa cells using CSB-PA03829A0Rb at dilution of 1:100 and Alexa Fluor 488-conjugated AffiniPure Goat Anti-Rabbit IgG(H+L)