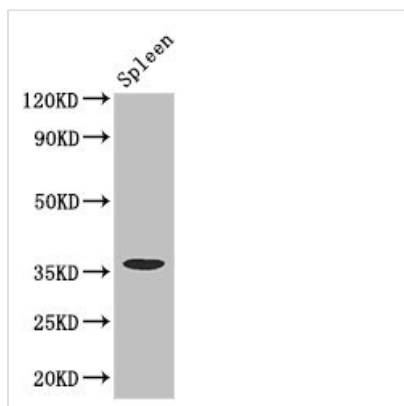




FCGR2A Antibody

Product Code	CSB-PA04459A0Rb
Storage	Upon receipt, store at -20°C or -80°C. Avoid repeated freeze.
Uniprot No.	P12318
Immunogen	Recombinant Human Low affinity immunoglobulin gamma Fc region receptor II-a protein (241-317AA)
Raised In	Rabbit
Species Reactivity	Human, Mouse
Tested Applications	ELISA, WB, IHC, IF; Recommended dilution: WB:1:1000-1:5000, IHC:1:20-1:200, IF:1:50-1:200
Form	Liquid
Conjugate	Non-conjugated
Storage Buffer	Preservative: 0.03% Proclin 300 Constituents: 50% Glycerol, 0.01M PBS, PH 7.4
Purification Method	>95%, Protein G purified
Isotype	IgG
Clonality	Polyclonal
Alias	Low affinity immunoglobulin gamma Fc region receptor II-a (IgG Fc receptor II-a) (CDw32) (Fc-gamma RII-a) (Fc-gamma-RIIa) (FcRII-a) (CD antigen CD32), FCGR2A, CD32 FCG2 FCGR2A1 IGFR2
Immunogen Species	Homo sapiens (Human)
Research Area	Immunology
Target Names	FCGR2A

Image



Western Blot

Positive WB detected in: Mouse spleen tissue

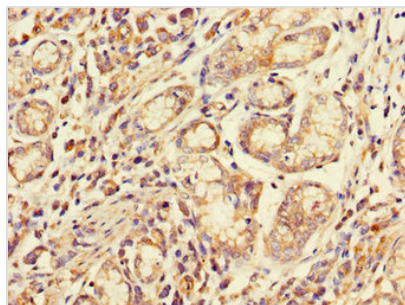
All lanes: FCGR2A antibody at 3.4µg/ml

Secondary

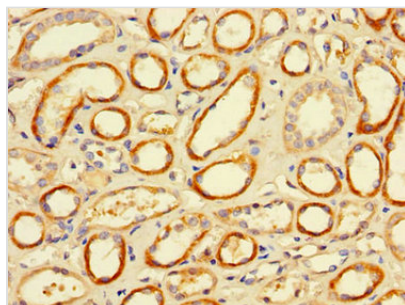
Goat polyclonal to rabbit IgG at 1/50000 dilution

Predicted band size: 36, 35 kDa

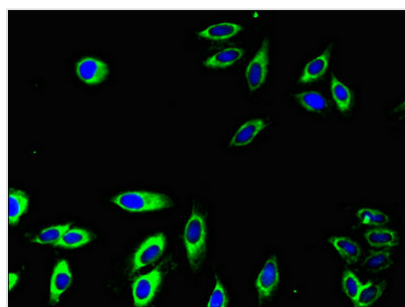
Observed band size: 36 kDa



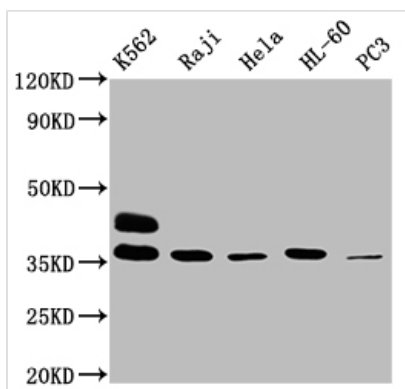
Immunohistochemistry of paraffin-embedded human gastric cancer using CSB-PA04459A0Rb at dilution of 1:100



Immunohistochemistry of paraffin-embedded human kidney tissue using CSB-PA04459A0Rb at dilution of 1:100



Immunofluorescent analysis of HeLa cells using CSB-PA04459A0Rb at dilution of 1:100 and Alexa Fluor 488-conjugated AffiniPure Goat Anti-Rabbit IgG(H+L)



Western Blot

Positive WB detected in: K562 whole cell lysate, Raji whole cell lysate, HeLa whole cell lysate, HL60 whole cell lysate, PC-3 whole cell lysate
 All lanes: FCGR2A antibody at 1:2000
 Secondary
 Goat polyclonal to rabbit IgG at 1/50000 dilution
 Predicted band size: 36, 35 kDa
 Observed band size: 36 kDa

Usage

For Research Use Only. Not for use in diagnostic or therapeutic procedures.