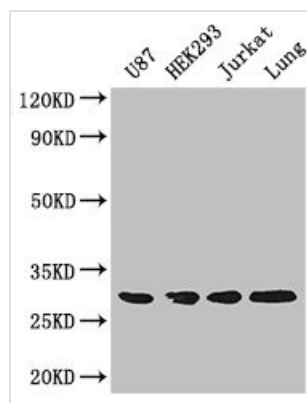




# LASP1 Antibody

<b>Product Code</b>	CSB-PA04629A0Rb
<b>Storage</b>	Upon receipt, store at -20°C or -80°C. Avoid repeated freeze.
<b>Uniprot No.</b>	Q14847
<b>Immunogen</b>	Recombinant Human LIM and SH3 domain protein 1 protein (128-252AA)
<b>Raised In</b>	Rabbit
<b>Species Reactivity</b>	Human, Mouse
<b>Tested Applications</b>	ELISA, WB, IHC, IF, IP; Recommended dilution: WB:1:500-1:2000, IHC:1:20-1:200, IF:1:50-1:200, IP:1:200-1:2000
<b>Form</b>	Liquid
<b>Conjugate</b>	Non-conjugated
<b>Storage Buffer</b>	Preservative: 0.03% Proclin 300 Constituents: 50% Glycerol, 0.01M PBS, PH 7.4
<b>Purification Method</b>	>95%, Protein G purified
<b>Isotype</b>	IgG
<b>Clonality</b>	Polyclonal
<b>Alias</b>	LIM and SH3 domain protein 1 (LASP-1) (Metastatic lymph node gene 50 protein) (MLN 50), LASP1, MLN50
<b>Immunogen Species</b>	Homo sapiens (Human)
<b>Research Area</b>	Signal Transduction
<b>Target Names</b>	LASP1

## Image



### Western Blot

Positive WB detected in: U87 whole cell lysate, HEK293 whole cell lysate, Jurkat whole cell lysate, Mouse lung tissue

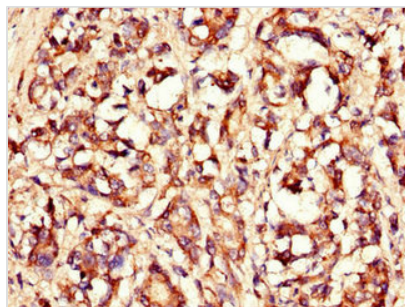
All lanes: LASP1 antibody at 4μg/ml

### Secondary

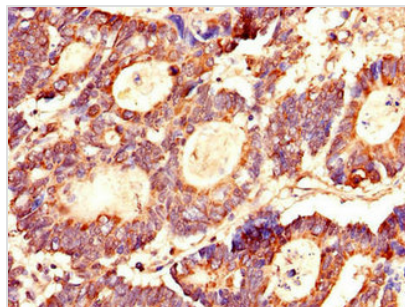
Goat polyclonal to rabbit IgG at 1/50000 dilution

Predicted band size: 30, 37, 24 kDa

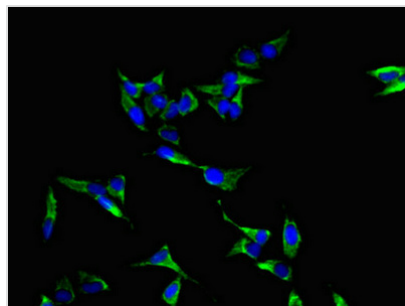
Observed band size: 30 kDa



Immunohistochemistry of paraffin-embedded human gastric cancer using CSB-PA04629A0Rb at dilution of 1:100



Immunohistochemistry of paraffin-embedded human colon cancer using CSB-PA04629A0Rb at dilution of 1:100



Immunofluorescent analysis of Hela cells using CSB-PA04629A0Rb at dilution of 1:100 and Alexa Fluor 488-conjugated AffiniPure Goat Anti-Rabbit IgG(H+L)