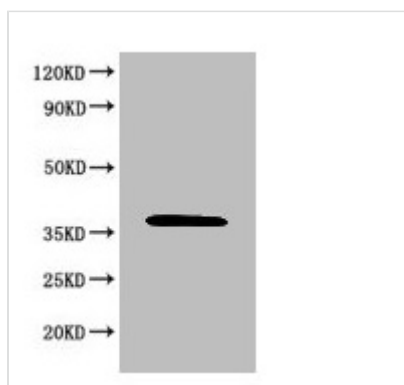




MAPK8 Antibody

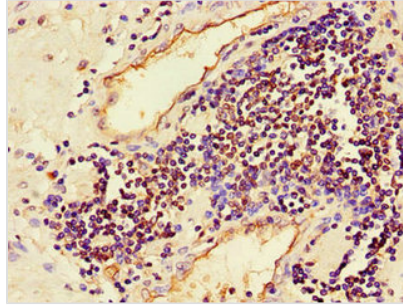
Product Code	CSB-PA16759A0Rb
Storage	Upon receipt, store at -20°C or -80°C. Avoid repeated freeze.
Uniprot No.	P45983
Immunogen	Recombinant Human Mitogen-activated protein kinase 8 protein (5-300AA)
Raised In	Rabbit
Species Reactivity	Human
Tested Applications	ELISA, WB, IHC, IF; Recommended dilution: WB:1:1000-1:5000, IHC:1:20-1:200, IF:1:50-1:200
Form	Liquid
Conjugate	Non-conjugated
Storage Buffer	Preservative: 0.03% Proclin 300 Constituents: 50% Glycerol, 0.01M PBS, PH 7.4
Purification Method	>95%, Protein G purified
Isotype	IgG
Clonality	Polyclonal
Alias	Mitogen-activated protein kinase 8 (MAP kinase 8) (MAPK 8) (EC 2.7.11.24) (JNK-46) (Stress-activated protein kinase 1c) (SAPK1c) (Stress-activated protein kinase JNK1) (c-Jun N-terminal kinase 1), MAPK8, JNK1 PRKM8 SAPK1 SAPK1C
Immunogen Species	Homo sapiens (Human)
Research Area	Signal Transduction
Target Names	MAPK8

Image

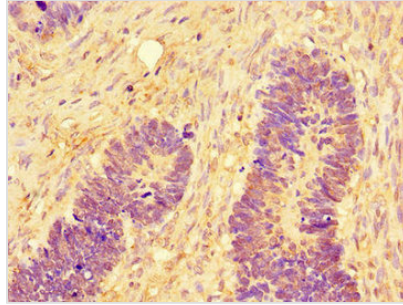


Western Blot

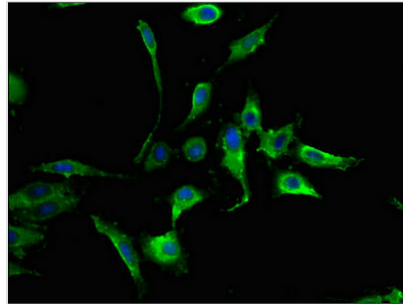
Positive WB detected in: 293T whole cell lysate
 All lanes: MAPK8 antibody at 6µg/ml
 Secondary
 Goat polyclonal to rabbit IgG at 1/50000 dilution
 Predicted band size: 49, 45, 36 KDa
 Observed band size: 36 KDa



Immunohistochemistry of paraffin-embedded human prostate cancer using CSB-PA16759A0Rb at dilution of 1:100



Immunohistochemistry of paraffin-embedded human ovarian cancer using CSB-PA16759A0Rb at dilution of 1:100



Immunofluorescent analysis of HeLa cells using CSB-PA16759A0Rb at dilution of 1:100 and Alexa Fluor 488-conjugated AffiniPure Goat Anti-Rabbit IgG(H+L)