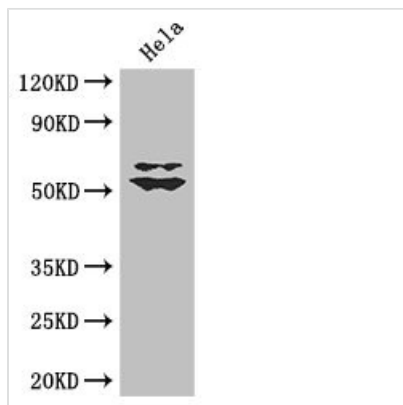




KLF5 Antibody

Product Code	CSB-PA613429LA01HU
Storage	Upon receipt, store at -20°C or -80°C. Avoid repeated freeze.
Uniprot No.	Q13887
Immunogen	Recombinant Human Krueppel-like factor 5 protein (69-346AA)
Raised In	Rabbit
Species Reactivity	Human
Tested Applications	ELISA, WB; Recommended dilution: WB:1:2000-1:10000
Form	Liquid
Conjugate	Non-conjugated
Storage Buffer	Preservative: 0.03% Proclin 300 Constituents: 50% Glycerol, 0.01M PBS, PH 7.4
Purification Method	>95%, Protein G purified
Isotype	IgG
Clonality	Polyclonal
Alias	Krueppel-like factor 5 (Basic transcription element-binding protein 2) (BTE-binding protein 2) (Colon krueppel-like factor) (GC-box-binding protein 2) (Intestinal-enriched krueppel-like factor) (Transcription factor BTEB2), KLF5, BTEB2 CKLF IKLF
Immunogen Species	Homo sapiens (Human)
Research Area	Cell Biology
Target Names	KLF5

Image



Western Blot

Positive WB detected in: HeLa whole cell lysate

All lanes: KLF5 antibody at 3µg/ml

Secondary

Goat polyclonal to rabbit IgG at 1/50000 dilution

Predicted band size: 51, 34, 19, 42 kDa

Observed band size: 51, 60 kDa

Usage

For Research Use Only. Not for use in diagnostic or therapeutic procedures.