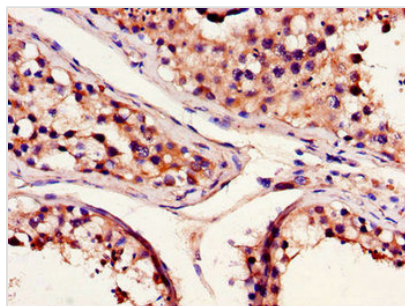




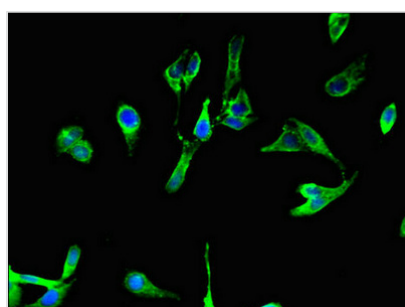
BCL2A1 Antibody

Product Code	CSB-PA614974LA01HU
Storage	Upon receipt, store at -20°C or -80°C. Avoid repeated freeze.
Uniprot No.	Q16548
Immunogen	Recombinant Human Bcl-2-related protein A1 protein (1-175AA)
Raised In	Rabbit
Species Reactivity	Human
Tested Applications	ELISA, IHC, IF; Recommended dilution: IHC:1:20-1:200, IF:1:50-1:200
Form	Liquid
Conjugate	Non-conjugated
Storage Buffer	Preservative: 0.03% Proclin 300 Constituents: 50% Glycerol, 0.01M PBS, PH 7.4
Purification Method	>95%, Protein G purified
Isotype	IgG
Clonality	Polyclonal
Alias	Bcl-2-related protein A1 (Bcl-2-like protein 5) (Bcl2-L-5) (Hemopoietic-specific early response protein) (Protein BFL-1) (Protein GRS), BCL2A1, BCL2L5 BFL1 GRS HBPA1
Immunogen Species	Homo sapiens (Human)
Research Area	Cell Biology
Target Names	BCL2A1

Image



Immunohistochemistry of paraffin-embedded human testis tissue using CSB-PA614974LA01HU at dilution of 1:100



Immunofluorescent analysis of HeLa cells using CSB-PA614974LA01HU at dilution of 1:100 and Alexa Fluor 488-conjugated AffiniPure Goat Anti-Rabbit IgG(H+L)

