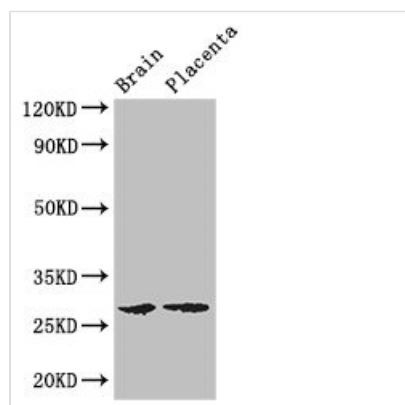




FBXL22 Antibody

Product Code	CSB-PA757543LA01HU
Storage	Upon receipt, store at -20°C or -80°C. Avoid repeated freeze.
Uniprot No.	Q6P050
Immunogen	Recombinant Human F-box and leucine-rich protein 22 protein (123-229AA)
Raised In	Rabbit
Species Reactivity	Human, Mouse
Tested Applications	ELISA, WB, IHC, IF; Recommended dilution: WB:1:1000-1:5000, IHC:1:20-1:200, IF:1:50-1:200
Form	Liquid
Conjugate	Non-conjugated
Storage Buffer	Preservative: 0.03% Proclin 300 Constituents: 50% Glycerol, 0.01M PBS, PH 7.4
Purification Method	>95%, Protein G purified
Isotype	IgG
Clonality	Polyclonal
Alias	F-box and leucine-rich protein 22, FBXL22
Immunogen Species	Homo sapiens (Human)
Research Area	Others
Target Names	FBXL22

Image



Western Blot

Positive WB detected in: Mouse brain tissue,
Human placenta tissue

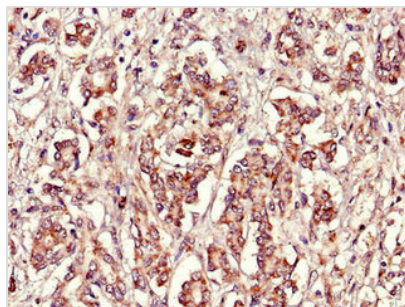
All lanes: FBXL22 antibody at 3µg/ml

Secondary

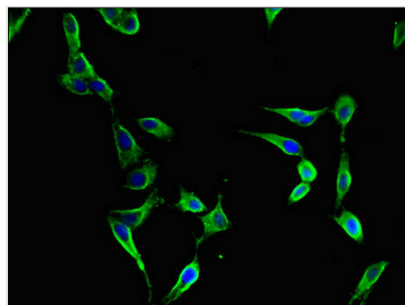
Goat polyclonal to rabbit IgG at 1/50000 dilution

Predicted band size: 28 kDa

Observed band size: 28 kDa



Immunohistochemistry of paraffin-embedded human pancreatic cancer using CSB-PA757543LA01HU at dilution of 1:100



Immunofluorescent analysis of HeLa cells using CSB-PA757543LA01HU at dilution of 1:100 and Alexa Fluor 488-conjugated AffiniPure Goat Anti-Rabbit IgG(H+L)