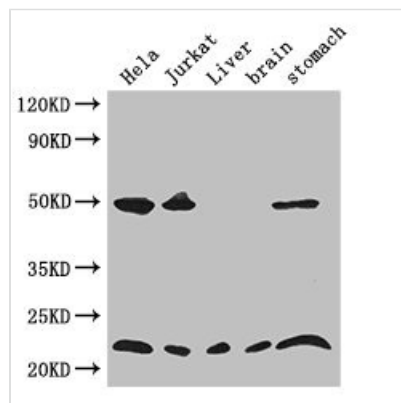




COMMD1 Antibody

Product Code	CSB-PA818712LA01HU
Storage	Upon receipt, store at -20°C or -80°C. Avoid repeated freeze.
Uniprot No.	Q8N668
Immunogen	Recombinant Human COMM domain-containing protein 1 protein (2-190AA)
Raised In	Rabbit
Species Reactivity	Human, Mouse
Tested Applications	ELISA, WB, IHC, IF; Recommended dilution: WB:1:1000-1:5000, IHC:1:20-1:200, IF:1:50-1:200
Form	Liquid
Conjugate	Non-conjugated
Storage Buffer	Preservative: 0.03% Proclin 300 Constituents: 50% Glycerol, 0.01M PBS, PH 7.4
Purification Method	>95%, Protein G purified
Isotype	IgG
Clonality	Polyclonal
Alias	COMM domain-containing protein 1 (Protein Murr1), COMMD1, C2orf5 MURR1
Immunogen Species	Homo sapiens (Human)
Research Area	Epigenetics and Nuclear Signaling
Target Names	COMMD1

Image



Western Blot

Positive WB detected in: HeLa whole cell lysate, Jurkat whole cell lysate, Mouse liver tissue, Mouse brain tissue, Mouse stomach tissue

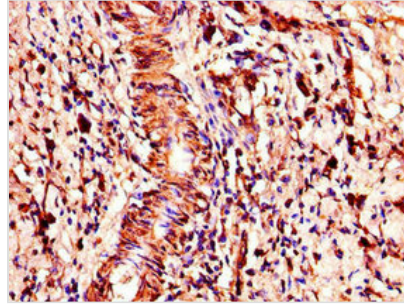
All lanes: COMMD1 antibody at 3.4µg/ml

Secondary

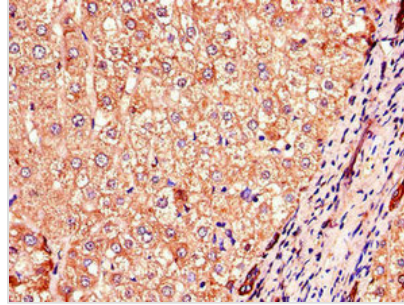
Goat polyclonal to rabbit IgG at 1/50000 dilution

Predicted band size: 22, 18 kDa

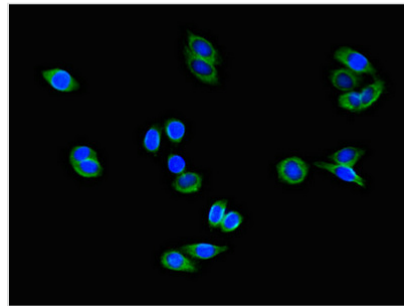
Observed band size: 22, 50 kDa



Immunohistochemistry of paraffin-embedded human gastric cancer using CSB-PA818712LA01HU at dilution of 1:100



Immunohistochemistry of paraffin-embedded human liver cancer using CSB-PA818712LA01HU at dilution of 1:100



Immunofluorescent analysis of HepG2 cells using CSB-PA818712LA01HU at dilution of 1:100 and Alexa Fluor 488-conjugated AffiniPure Goat Anti-Rabbit IgG(H+L)

Usage

For Research Use Only. Not for use in diagnostic or therapeutic procedures.