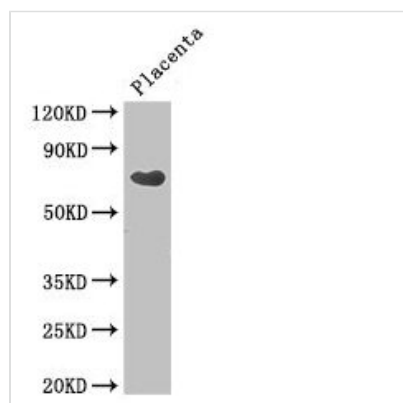




CEP70 Antibody

Product Code	CSB-PA836778LA01HU
Storage	Upon receipt, store at -20°C or -80°C. Avoid repeated freeze.
Uniprot No.	Q8NHQ1
Immunogen	Recombinant Human Centrosomal protein of 70 kDa protein (99-276AA)
Raised In	Rabbit
Species Reactivity	Human
Tested Applications	ELISA, WB, IHC, IF; Recommended dilution: WB:1:2000-1:10000, IHC:1:20-1:200, IF:1:50-1:200
Form	Liquid
Conjugate	Non-conjugated
Storage Buffer	Preservative: 0.03% Proclin 300 Constituents: 50% Glycerol, 0.01M PBS, PH 7.4
Purification Method	>95%, Protein G purified
Isotype	IgG
Clonality	Polyclonal
Alias	Centrosomal protein of 70 kDa (Cep70) (p10-binding protein), CEP70, BITE
Immunogen Species	Homo sapiens (Human)
Research Area	Tags & Cell Markers
Target Names	CEP70

Image



Western Blot

Positive WB detected in: Human placenta tissue

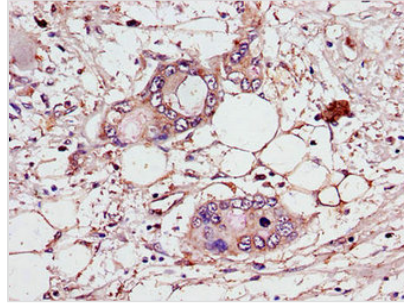
All lanes: CEP70 antibody at 3.4µg/ml

Secondary

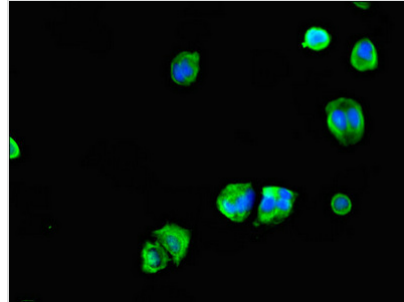
Goat polyclonal to rabbit IgG at 1/50000 dilution

Predicted band size: 70, 65, 26, 68 kDa

Observed band size: 70 kDa



Immunohistochemistry of paraffin-embedded human pancreatic cancer using CSB-PA836778LA01HU at dilution of 1:100



Immunofluorescent analysis of MCF-7 cells using CSB-PA836778LA01HU at dilution of 1:100 and Alexa Fluor 488-conjugated AffiniPure Goat Anti-Rabbit IgG(H+L)

Usage

For Research Use Only. Not for use in diagnostic or therapeutic procedures.