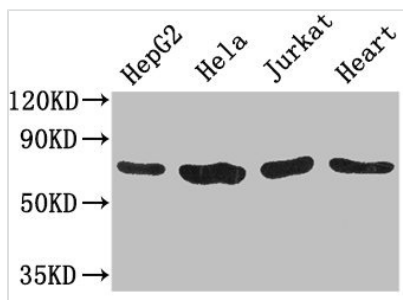




# CHFR Antibody

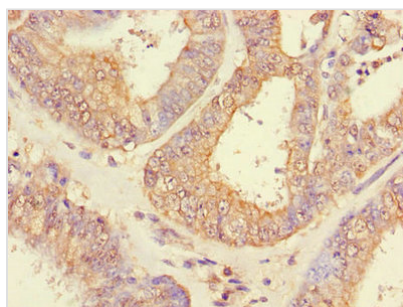
<b>Product Code</b>	CSB-PA839315LA01HU
<b>Storage</b>	Upon receipt, store at -20°C or -80°C. Avoid repeated freeze.
<b>Uniprot No.</b>	Q96EP1
<b>Immunogen</b>	Recombinant Human E3 ubiquitin-protein ligase CHFR protein (141-422AA)
<b>Raised In</b>	Rabbit
<b>Species Reactivity</b>	Human, Mouse
<b>Tested Applications</b>	ELISA, WB, IHC; Recommended dilution: WB:1:1000-1:5000, IHC:1:20-1:200
<b>Form</b>	Liquid
<b>Conjugate</b>	Non-conjugated
<b>Storage Buffer</b>	Preservative: 0.03% Proclin 300 Constituents: 50% Glycerol, 0.01M PBS, PH 7.4
<b>Purification Method</b>	>95%, Protein G purified
<b>Isotype</b>	IgG
<b>Clonality</b>	Polyclonal
<b>Alias</b>	E3 ubiquitin-protein ligase CHFR (EC 2.3.2.27) (Checkpoint with forkhead and RING finger domains protein) (RING finger protein 196) (RING-type E3 ubiquitin transferase CHFR), CHFR, RNF196
<b>Immunogen Species</b>	Homo sapiens (Human)
<b>Research Area</b>	Cell Biology
<b>Target Names</b>	CHFR

## Image

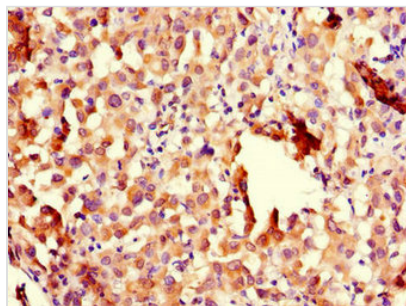


### Western Blot

Positive WB detected in: HepG2 whole cell lysate, HeLa whole cell lysate, Jurkat whole cell lysate, Mouse heart tissue  
All lanes: CHFR antibody at 3.2µg/ml  
Secondary  
Goat polyclonal to rabbit IgG at 1/50000000 dilution  
Predicted band size: 74, 73, 70, 64 kDa  
Observed band size: 74 kDa



Immunohistochemistry of paraffin-embedded human endometrial cancer using CSB-PA839315LA01HU at dilution of 1:100



Immunohistochemistry of paraffin-embedded human lung cancer using CSB-PA839315LA01HU at dilution of 1:100

**Usage**

For Research Use Only. Not for use in diagnostic or therapeutic procedures.