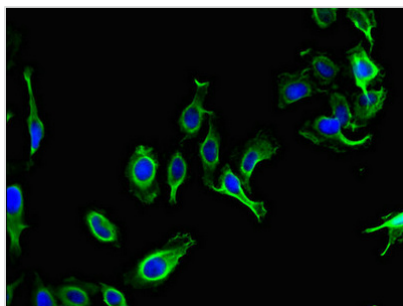




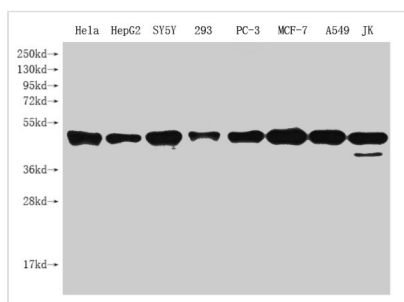
PARD6G Antibody

Product Code	CSB-PA863155LA01HU
Storage	Upon receipt, store at -20°C or -80°C. Avoid repeated freeze.
Uniprot No.	Q9BYG4
Immunogen	Recombinant Human Partitioning defective 6 homolog gamma protein (249-326AA)
Raised In	Rabbit
Species Reactivity	Human
Tested Applications	ELISA, WB, IF; Recommended dilution: WB:1:500-1:5000, IF:1:50-1:200
Form	Liquid
Conjugate	Non-conjugated
Storage Buffer	Liquid in PBS containing 50% glycerol, and 0.02% sodium azide.
Purification Method	>95%, Protein G purified
Isotype	IgG
Clonality	Polyclonal
Product Type	Polyclonal Antibody
Immunogen Species	Homo sapiens (Human)
Research Area	Signal Transduction
Target Names	PARD6G

Image



Immunofluorescent analysis of HeLa cells using CSB-PA863155LA01HU at dilution of 1:100 and Alexa Fluor 488-conjugated AffiniPure Goat Anti-Rabbit IgG(H+L)



Western Blot

Positive WB detected in: HeLa whole cell lysate, HepG2 whole cell lysate, SY5Y whole cell lysate, 293 whole cell lysate, PC-3 whole cell lysate, MCF-7 whole cell lysate, A549 whole cell lysate, JK whole cell lysate

All lanes: PARD6G antibody at 1:1000

Secondary

Goat polyclonal to rabbit IgG at 1/50000 dilution

Predicted band size: 41, 13 kDa

Observed band size: 41 kDa



Usage

For Research Use Only. Not for use in diagnostic or therapeutic procedures.