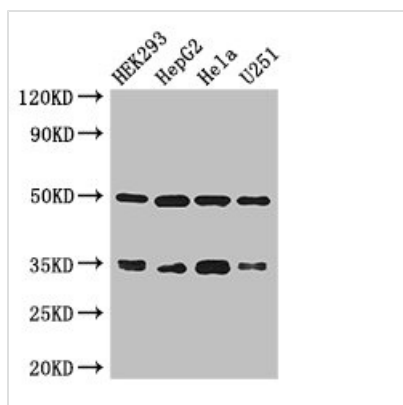




LZTFL1 Antibody

Product Code	CSB-PA885687LA01HU
Storage	Upon receipt, store at -20°C or -80°C. Avoid repeated freeze.
Uniprot No.	Q9NQ48
Immunogen	Recombinant Human Leucine zipper transcription factor-like protein 1 protein (116-299AA)
Raised In	Rabbit
Species Reactivity	Human
Tested Applications	ELISA, WB, IHC, IF, IP; Recommended dilution: WB:1:500-1:5000, IHC:1:20-1:200, IF:1:50-1:200, IP:1:200-1:2000
Form	Liquid
Conjugate	Non-conjugated
Storage Buffer	Preservative: 0.03% Proclin 300 Constituents: 50% Glycerol, 0.01M PBS, PH 7.4
Purification Method	>95%, Protein G purified
Isotype	IgG
Clonality	Polyclonal
Alias	Leucine zipper transcription factor-like protein 1, LZTFL1
Immunogen Species	Homo sapiens (Human)
Research Area	Others
Target Names	LZTFL1

Image



Western Blot

Positive WB detected in: HEK293 whole cell lysate, HepG2 whole cell lysate, HeLa whole cell lysate, U251 whole cell lysate

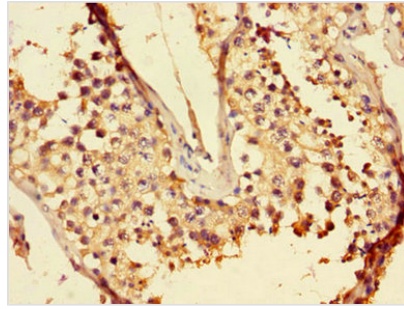
All lanes: LZTFL1 antibody at 3µg/ml

Secondary

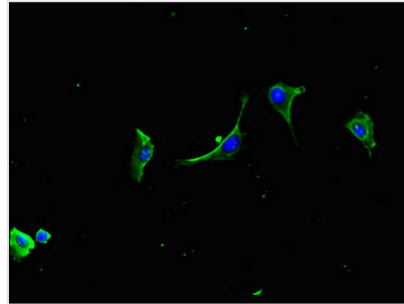
Goat polyclonal to rabbit IgG at 1/50000 dilution

Predicted band size: 35, 33, 30 kDa

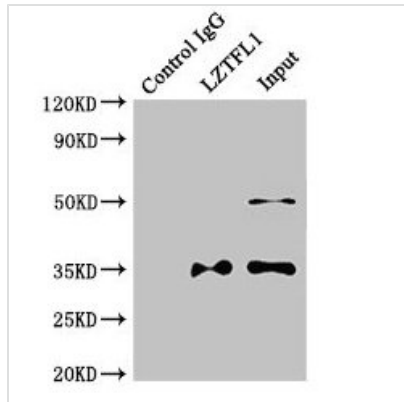
Observed band size: 35, 50 kDa



Immunohistochemistry of paraffin-embedded human testis tissue using CSB-PA885687LA01HU at dilution of 1:100



Immunofluorescent analysis of U251 cells using CSB-PA885687LA01HU at dilution of 1:100 and Alexa Fluor 488-conjugated AffiniPure Goat Anti-Rabbit IgG(H+L)



Immunoprecipitating LZTFL1 in HepG2 whole cell lysate

Lane 1: Rabbit control IgG instead of (1µg) instead of CSB-PA885687LA01HU in HepG2 whole cell lysate. For western blotting, a HRP-conjugated light chain specific antibody was used as the Secondary antibody (1/50000)
 Lane 2: CSB-PA885687LA01HU (4µg) + HepG2 whole cell lysate (500µg)
 Lane 3: HepG2 whole cell lysate (20µg)

Usage

For Research Use Only. Not for use in diagnostic or therapeutic procedures.