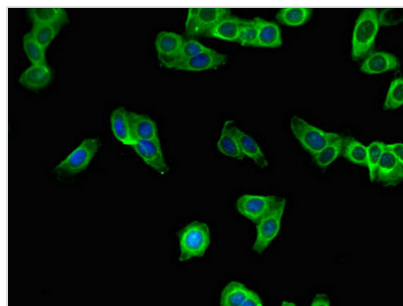




SBNO2 Antibody

Product Code	CSB-PA896873LA01HU
Storage	Upon receipt, store at -20°C or -80°C. Avoid repeated freeze.
Uniprot No.	Q9Y2G9
Immunogen	Recombinant Human Protein strawberry notch homolog 2 protein (6-146AA)
Raised In	Rabbit
Species Reactivity	Human
Tested Applications	ELISA, IF; Recommended dilution: IF:1:20-1:200
Form	Liquid
Conjugate	Non-conjugated
Storage Buffer	Preservative: 0.03% Proclin 300 Constituents: 50% Glycerol, 0.01M PBS, PH 7.4
Purification Method	>95%, Protein G purified
Isotype	IgG
Clonality	Polyclonal
Alias	Protein strawberry notch homolog 2, SBNO2, KIAA0963
Immunogen Species	Homo sapiens (Human)
Research Area	Immunology
Target Names	SBNO2

Image



Immunofluorescent analysis of HepG2 cells using CSB-PA896873LA01HU at dilution of 1:100 and Alexa Fluor 488-conjugated AffiniPure Goat Anti-Rabbit IgG(H+L)