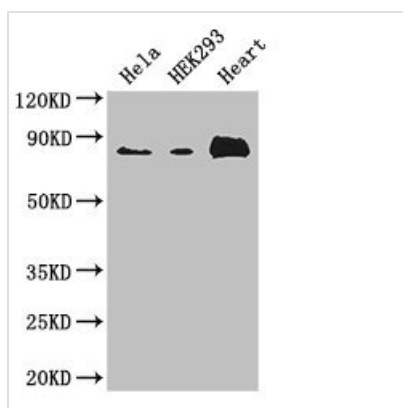




ABLIM1 Antibody

Product Code	CSB-PA001107LA01HU
Storage	Upon receipt, store at -20°C or -80°C. Avoid repeated freeze.
Uniprot No.	O14639
Immunogen	Recombinant Human Actin-binding LIM protein 1 protein (174-319AA)
Raised In	Rabbit
Species Reactivity	Human, Mouse
Tested Applications	ELISA, WB; Recommended dilution: WB:1:1000-1:5000
Form	Liquid
Conjugate	Non-conjugated
Storage Buffer	Preservative: 0.03% Proclin 300 Constituents: 50% Glycerol, 0.01M PBS, PH 7.4
Purification Method	>95%, Protein G purified
Isotype	IgG
Clonality	Polyclonal
Product Type	Polyclonal Antibody
Immunogen Species	Homo sapiens (Human)
Research Area	Signal Transduction
Target Names	ABLIM1

Image



Western Blot

Positive WB detected in: HeLa whole cell lysate, HEK293 whole cell lysate, Mouse heart tissue

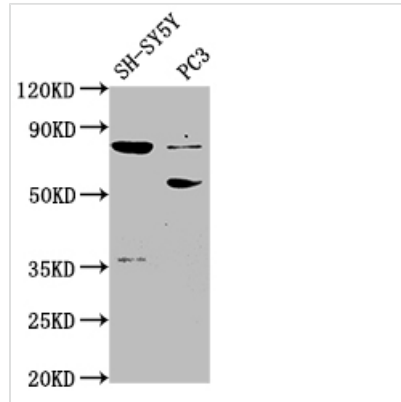
All lanes: ABLIM1 antibody at 3.4µg/ml

Secondary

Goat polyclonal to rabbit IgG at 1/50000 dilution

Predicted band size: 88, 82, 49, 47, 53, 85 kDa

Observed band size: 88 kDa

**Western Blot**

Positive WB detected in: SH-SY5Y whole cell lysate, PC-3 whole cell lysate

All lanes: ABLIM1 antibody at 1:2000

Secondary

Goat polyclonal to rabbit IgG at 1/50000 dilution

Predicted band size: 88, 82, 49, 47, 53, 85 kDa

Observed band size: 88, 53 kDa

Usage

For Research Use Only. Not for use in diagnostic or therapeutic procedures.