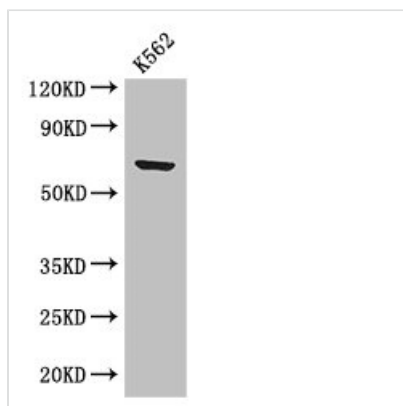




# BTRC Antibody

|                            |   |
|----------------------------|---|
| <b>Product Code</b>        | CSB-PA897464LA01HU  |
| <b>Storage</b>             | Upon receipt, store at -20°C or -80°C. Avoid repeated freeze.   |
| <b>Uniprot No.</b>         | Q9Y297  |
| <b>Immunogen</b>           | Recombinant Human F-box/WD repeat-containing protein 1A protein (397-448AA)   |
| <b>Raised In</b>           | Rabbit  |
| <b>Species Reactivity</b>  | Human   |
| <b>Tested Applications</b> | ELISA, WB, IHC, IF; Recommended dilution: WB:1:2000-1:10000, IHC:1:20-1:200, IF:1:50-1:200  |
| <b>Form</b>                | Liquid  |
| <b>Conjugate</b>           | Non-conjugated  |
| <b>Storage Buffer</b>      | Preservative: 0.03% Proclin 300<br>Constituents: 50% Glycerol, 0.01M PBS, PH 7.4  |
| <b>Purification Method</b> | >95%, Protein G purified  |
| <b>Isotype</b>             | IgG   |
| <b>Clonality</b>           | Polyclonal  |
| <b>Alias</b>               | F-box/WD repeat-containing protein 1A (E3RSIkappaB) (Epididymis tissue protein Li 2a) (F-box and WD repeats protein beta-TrCP) (plkappaBalph-E3 receptor subunit), BTRC, BTRCP FBW1A FBXW1A |
| <b>Immunogen Species</b>   | Homo sapiens (Human)  |
| <b>Research Area</b>       | Microbiology  |
| <b>Target Names</b>        | BTRC  |

## Image



### Western Blot

Positive WB detected in: K562 whole cell lysate

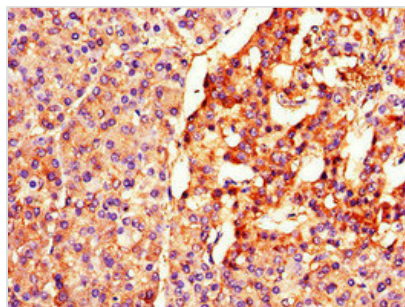
All lanes: BTRC antibody at 2.8µg/ml

Secondary

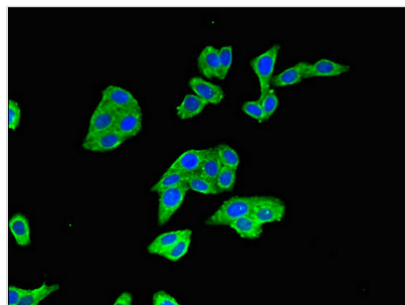
Goat polyclonal to rabbit IgG at 1/50000 dilution

Predicted band size: 69, 66 kDa

Observed band size: 69 kDa



Immunohistochemistry of paraffin-embedded human pancreatic tissue using CSB-PA897464LA01HU at dilution of 1:100



Immunofluorescent analysis of HepG2 cells using CSB-PA897464LA01HU at dilution of 1:100 and Alexa Fluor 488-conjugated AffiniPure Goat Anti-Rabbit IgG(H+L)