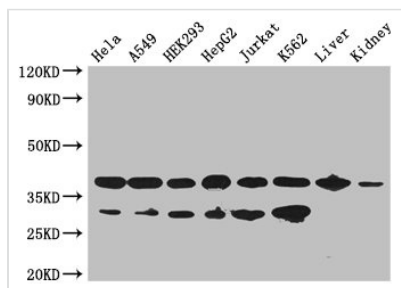




GAPDH Antibody

Product Code	CSB-PA00029A0Rb
Storage	Upon receipt, store at -20°C or -80°C. Avoid repeated freeze.
Uniprot No.	P04406
Immunogen	Recombinant Human Glyceraldehyde-3-phosphate dehydrogenase protein (2-335AA)
Raised In	Rabbit
Species Reactivity	Human, Mouse
Tested Applications	ELISA, WB, IHC, IF; Recommended dilution: WB:1:500-1:5000, IHC:1:20-1:200, IF:1:50-1:200
Form	Liquid
Conjugate	Non-conjugated
Storage Buffer	Preservative: 0.03% Proclin 300 Constituents: 50% Glycerol, 0.01M PBS, PH 7.4
Purification Method	>95%, Protein G purified
Isotype	IgG
Clonality	Polyclonal
Alias	Glyceraldehyde-3-phosphate dehydrogenase (GAPDH) (EC 1.2.1.12) (Peptidyl-cysteine S-nitrosylase GAPDH) (EC 2.6.99.-), GAPDH, GAPD
Immunogen Species	Homo sapiens (Human)
Research Area	Neuroscience
Target Names	GAPDH

Image



Western Blot

Positive WB detected in: HeLa whole cell lysate, A549 whole cell lysate, HEK293 whole cell lysate, HepG2 whole cell lysate, Jurkat whole cell lysate, K562 whole cell lysate, Mouse liver tissue, Mouse kidney tissue

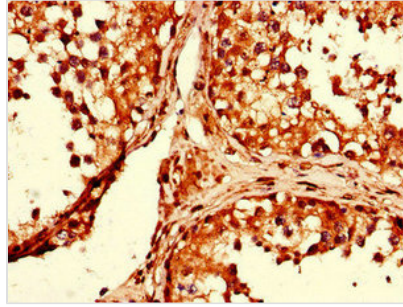
All lanes: GAPDH antibody at 2.5µg/ml

Secondary

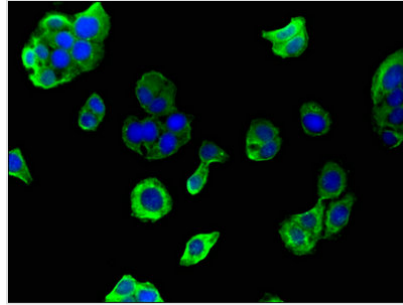
Goat polyclonal to rabbit IgG at 1/50000 dilution

Predicted band size: 37, 32 kDa

Observed band size: 37, 32 kDa



Immunohistochemistry of paraffin-embedded human testis tissue using CSB-PA00029A0Rb at dilution of 1:100



Immunofluorescent analysis of HepG2 cells using CSB-PA00029A0Rb at dilution of 1:100 and Alexa Fluor 488-conjugated AffiniPure Goat Anti-Rabbit IgG(H+L)

Usage

For Research Use Only. Not for use in diagnostic or therapeutic procedures.