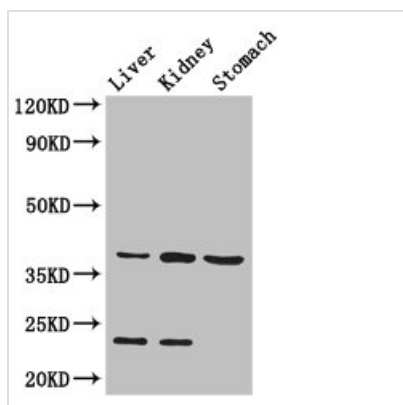




AKR1A1 Antibody

Product Code	CSB-PA001538LA01HU
Storage	Upon receipt, store at -20°C or -80°C. Avoid repeated freeze.
Uniprot No.	P14550
Immunogen	Recombinant Human Alcohol dehydrogenase [NADP(+)] protein (2-325AA)
Raised In	Rabbit
Species Reactivity	Human, Mouse
Tested Applications	ELISA, WB, IHC, IF; Recommended dilution: WB:1:2000-1:10000, IHC:1:20-1:200, IF:1:50-1:200
Form	Liquid
Conjugate	Non-conjugated
Storage Buffer	Preservative: 0.03% Proclin 300 Constituents: 50% Glycerol, 0.01M PBS, PH 7.4
Purification Method	>95%, Protein G purified
Isotype	IgG
Clonality	Polyclonal
Alias	Alcohol dehydrogenase [NADP(+)] (EC 1.1.1.2) (Aldehyde reductase) (Aldo-keto reductase family 1 member A1), AKR1A1, ALDR1 ALR
Immunogen Species	Homo sapiens (Human)
Research Area	Signal Transduction
Target Names	AKR1A1

Image



Western Blot

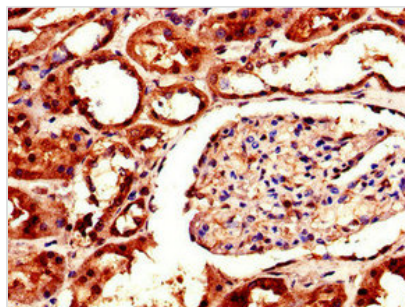
Positive WB detected in: Mouse liver tissue, Mouse kidney tissue, Mouse stomach tissue
All lanes: Akr1a1 antibody at 2.8µg/ml

Secondary

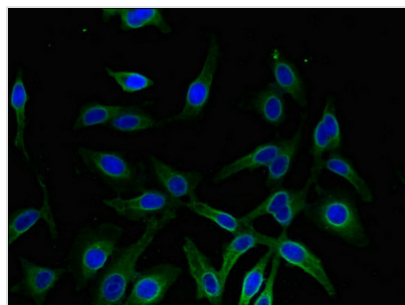
Goat polyclonal to rabbit IgG at 1/50000 dilution

Predicted band size: 37 kDa

Observed band size: 37, 23 kDa



Immunohistochemistry of paraffin-embedded human kidney tissue using CSB-PA001538LA01HU at dilution of 1:100



Immunofluorescent analysis of HeLa cells using CSB-PA001538LA01HU at dilution of 1:100 and Alexa Fluor 488-conjugated AffiniPure Goat Anti-Rabbit IgG(H+L)

Usage

For Research Use Only. Not for use in diagnostic or therapeutic procedures.