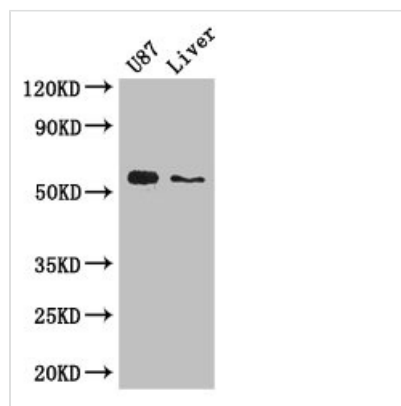




ALDH1A3 Antibody

Product Code	CSB-PA001567LA01HU
Storage	Upon receipt, store at -20°C or -80°C. Avoid repeated freeze.
Uniprot No.	P47895
Immunogen	Recombinant Human Aldehyde dehydrogenase family 1 member A3 protein (2-210AA)
Raised In	Rabbit
Species Reactivity	Human, Mouse
Tested Applications	ELISA, WB, IF; Recommended dilution: WB:1:2000-1:10000, IF:1:50-1:200
Form	Liquid
Conjugate	Non-conjugated
Storage Buffer	Preservative: 0.03% Proclin 300 Constituents: 50% Glycerol, 0.01M PBS, PH 7.4
Purification Method	>95%, Protein G purified
Isotype	IgG
Clonality	Polyclonal
Alias	Aldehyde dehydrogenase family 1 member A3 (EC 1.2.1.5) (Aldehyde dehydrogenase 6) (Retinaldehyde dehydrogenase 3) (RALDH-3) (RalDH3), ALDH1A3, ALDH6
Immunogen Species	Homo sapiens (Human)
Research Area	Neuroscience
Target Names	ALDH1A3

Image



Western Blot

Positive WB detected in: U87 whole cell lysate, Mouse liver tissue

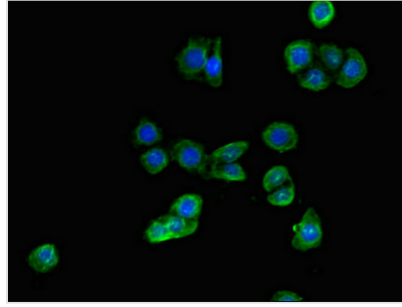
All lanes: ALDH1A3 antibody at 3µg/ml

Secondary

Goat polyclonal to rabbit IgG at 1/50000 dilution

Predicted band size: 57 kDa

Observed band size: 57 kDa



Immunofluorescent analysis of PC-3 cells using CSB-PA001567LA01HU at dilution of 1:100 and Alexa Fluor 488-conjugated AffiniPure Goat Anti-Rabbit IgG(H+L)

Usage

For Research Use Only. Not for use in diagnostic or therapeutic procedures.