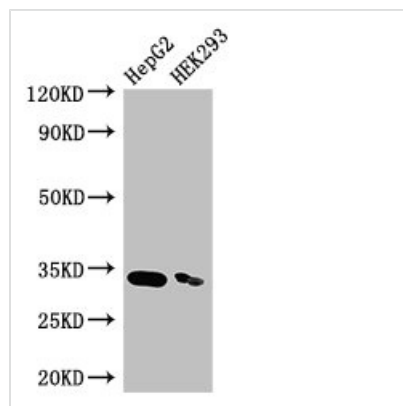




CRKL Antibody

Product Code	CSB-PA005980LA01HU
Storage	Upon receipt, store at -20°C or -80°C. Avoid repeated freeze.
Uniprot No.	P46109
Immunogen	Recombinant Human Crk-like protein (98-303AA)
Raised In	Rabbit
Species Reactivity	Human
Tested Applications	ELISA, WB, IF; Recommended dilution: WB:1:500-1:5000, IF:1:50-1:200
Form	Liquid
Conjugate	Non-conjugated
Storage Buffer	Preservative: 0.03% Proclin 300 Constituents: 50% Glycerol, 0.01M PBS, PH 7.4
Purification Method	>95%, Protein G purified
Isotype	IgG
Clonality	Polyclonal
Alias	Crk-like protein, CRKL
Immunogen Species	Homo sapiens (Human)
Research Area	Neuroscience
Target Names	CRKL

Image



Western Blot

Positive WB detected in: HepG2 whole cell lysate, HEK293 whole cell lysate

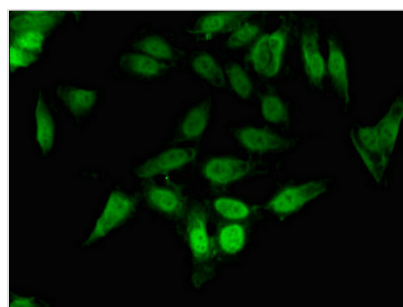
All lanes: CRKL antibody at 3.5µg/ml

Secondary

Goat polyclonal to rabbit IgG at 1/50000 dilution

Predicted band size: 34 kDa

Observed band size: 34 kDa



Immunofluorescent analysis of HeLa cells using CSB-PA005980LA01HU at dilution of 1:100 and Alexa Fluor 488-conjugated AffiniPure Goat Anti-Rabbit IgG(H+L)



Usage

For Research Use Only. Not for use in diagnostic or therapeutic procedures.