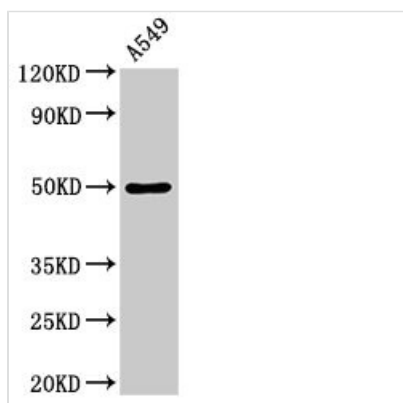




DRD1 Antibody

Product Code	CSB-PA007178LA01HU
Storage	Upon receipt, store at -20°C or -80°C. Avoid repeated freeze.
Uniprot No.	P21728
Immunogen	Recombinant Human D(1A) dopamine receptor protein (338-446AA)
Raised In	Rabbit
Species Reactivity	Human
Tested Applications	ELISA, WB, IHC, IF; Recommended dilution: WB:1:500-1:5000, IHC:1:20-1:200, IF:1:50-1:200
Form	Liquid
Conjugate	Non-conjugated
Storage Buffer	Preservative: 0.03% Proclin 300 Constituents: 50% Glycerol, 0.01M PBS, PH 7.4
Purification Method	>95%, Protein G purified
Isotype	IgG
Clonality	Polyclonal
Alias	D(1A) dopamine receptor (Dopamine D1 receptor), DRD1
Immunogen Species	Homo sapiens (Human)
Research Area	Neuroscience
Target Names	DRD1

Image



Western Blot

Positive WB detected in: A549 whole cell lysate

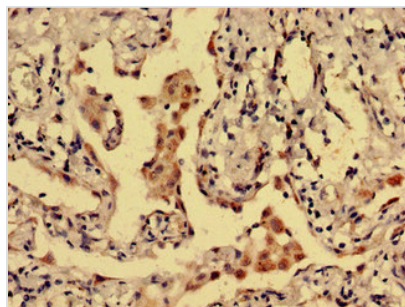
All lanes: DRD1 antibody at 3.5µg/ml

Secondary

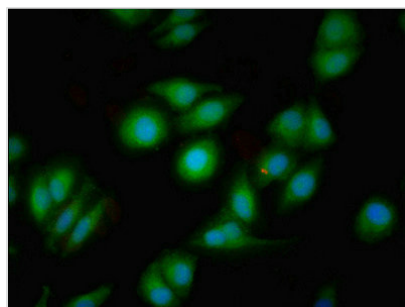
Goat polyclonal to rabbit IgG at 1/50000 dilution

Predicted band size: 50 kDa

Observed band size: 50 kDa



Immunohistochemistry analysis of human lung cancer using CSB-PA007178LA01HU at dilution of 1:100



Immunofluorescent analysis of A549 cells using CSB-PA007178LA01HU at dilution of 1:100 and Alexa Fluor 488-conjugated AffiniPure Goat Anti-Rabbit IgG(H+L)

Usage

For Research Use Only. Not for use in diagnostic or therapeutic procedures.