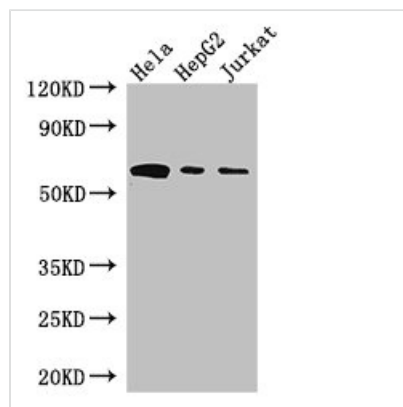




# HPSE Antibody

<b>Product Code</b>	CSB-PA010716LA01HU
<b>Storage</b>	Upon receipt, store at -20°C or -80°C. Avoid repeated freeze.
<b>Uniprot No.</b>	Q9Y251
<b>Immunogen</b>	Recombinant Human Heparanase protein (263-523AA)
<b>Raised In</b>	Rabbit
<b>Species Reactivity</b>	Human
<b>Tested Applications</b>	ELISA, WB, IHC; Recommended dilution: WB:1:500-1:5000, IHC:1:20-1:200
<b>Form</b>	Liquid
<b>Conjugate</b>	Non-conjugated
<b>Storage Buffer</b>	Preservative: 0.03% Proclin 300 Constituents: 50% Glycerol, 0.01M PBS, PH 7.4
<b>Purification Method</b>	>95%, Protein G purified
<b>Isotype</b>	IgG
<b>Clonality</b>	Polyclonal
<b>Alias</b>	Heparanase (EC 3.2.1.166) (Endo-glucuronidase) (Heparanase-1) (Hpa1) [Cleaved into: Heparanase 8 kDa subunit; Heparanase 50 kDa subunit], HPSE, HEP HPA HPA1 HPR1 HPSE1 HSE1
<b>Immunogen Species</b>	Homo sapiens (Human)
<b>Research Area</b>	Tags & Cell Markers
<b>Target Names</b>	HPSE

## Image



### Western Blot

Positive WB detected in: HeLa whole cell lysate, HepG2 whole cell lysate, Jurkat whole cell lysate

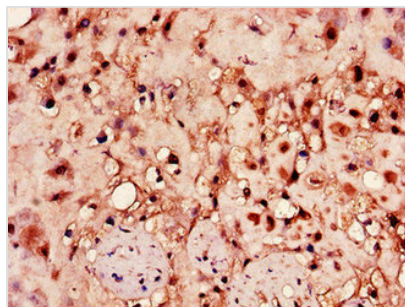
All lanes: HPSE antibody at 3µg/ml

### Secondary

Goat polyclonal to rabbit IgG at 1/50000 dilution

Predicted band size: 62, 55, 54, 43 kDa

Observed band size: 62 kDa



Immunohistochemistry of paraffin-embedded human placenta tissue using CSB-PA010716LA01HU at dilution of 1:100

---

**Usage**

For Research Use Only. Not for use in diagnostic or therapeutic procedures.