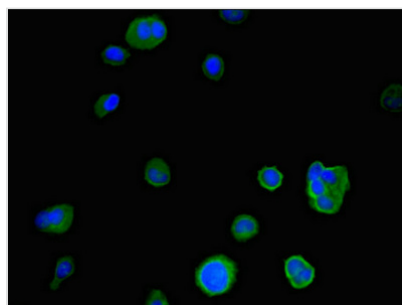




# IER3 Antibody

<b>Product Code</b>	CSB-PA011002LA01HU
<b>Storage</b>	Upon receipt, store at -20°C or -80°C. Avoid repeated freeze.
<b>Uniprot No.</b>	P46695
<b>Immunogen</b>	Recombinant Human Radiation-inducible immediate-early gene IEX-1 protein (1-82AA)
<b>Raised In</b>	Rabbit
<b>Species Reactivity</b>	Human
<b>Tested Applications</b>	ELISA, IF; Recommended dilution: IF:1:50-1:200
<b>Form</b>	Liquid
<b>Conjugate</b>	Non-conjugated
<b>Storage Buffer</b>	Preservative: 0.03% Proclin 300 Constituents: 50% Glycerol, 0.01M PBS, PH 7.4
<b>Purification Method</b>	>95%, Protein G purified
<b>Isotype</b>	IgG
<b>Clonality</b>	Polyclonal
<b>Alias</b>	Radiation-inducible immediate-early gene IEX-1 (Differentiation-dependent gene 2 protein) (Protein DIF-2) (Immediate early protein GLY96) (Immediate early response 3 protein) (PACAP-responsive gene 1 protein) (Protein PRG1), IER3, DIF2 IEX1 PRG1
<b>Immunogen Species</b>	Homo sapiens (Human)
<b>Research Area</b>	Cell Biology
<b>Target Names</b>	IER3

## Image



Immunofluorescent analysis of MCF-7 cells using CSB-PA011002LA01HU at dilution of 1:100 and Alexa Fluor 488-conjugated AffiniPure Goat Anti-Rabbit IgG(H+L)

**Usage** For Research Use Only. Not for use in diagnostic or therapeutic procedures.