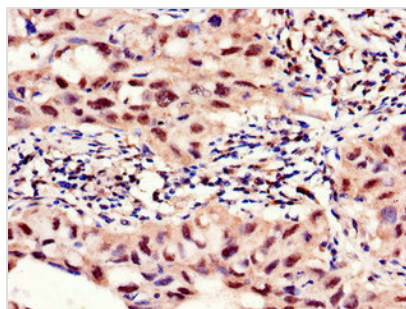




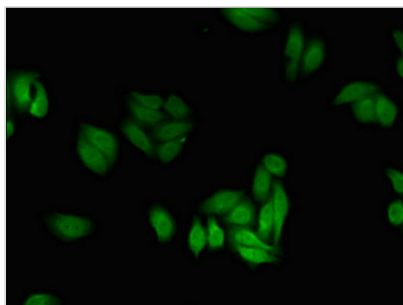
# PFKFB2 Antibody

<b>Product Code</b>	CSB-PA017818LA01HU
<b>Storage</b>	Upon receipt, store at -20°C or -80°C. Avoid repeated freeze.
<b>Uniprot No.</b>	O60825
<b>Immunogen</b>	Recombinant Human 6-phosphofructo-2-kinase/fructose-2,6-bisphosphatase 2 protein (360-505AA)
<b>Raised In</b>	Rabbit
<b>Species Reactivity</b>	Human, Rat
<b>Tested Applications</b>	ELISA, WB, IHC, IF; Recommended dilution: WB:1:500-1:5000, IHC:1:20-1:200, IF:1:50-1:200
<b>Form</b>	Liquid
<b>Conjugate</b>	Non-conjugated
<b>Storage Buffer</b>	Preservative: 0.03% Proclin 300 Constituents: 50% Glycerol, 0.01M PBS, PH 7.4
<b>Purification Method</b>	>95%, Protein G purified
<b>Isotype</b>	IgG
<b>Clonality</b>	Polyclonal
<b>Alias</b>	6-phosphofructo-2-kinase/fructose-2,6-bisphosphatase 2 (6PF-2-K/Fru-2,6-P2ase 2) (PFK/FBPase 2) (6PF-2-K/Fru-2,6-P2ase heart-type isozyme) [Includes: 6-phosphofructo-2-kinase (EC 2.7.1.105); Fructose-2,6-bisphosphatase (EC 3.1.3.46)], PFKFB2
<b>Immunogen Species</b>	Homo sapiens (Human)
<b>Research Area</b>	Others
<b>Target Names</b>	PFKFB2

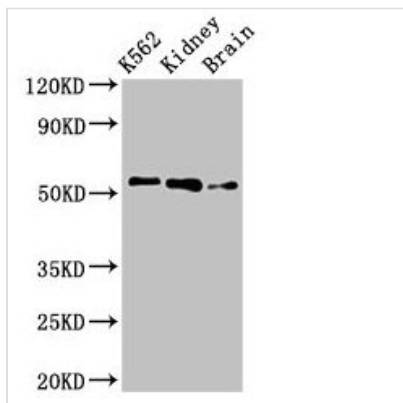
## Image



Immunohistochemistry of paraffin-embedded human lung cancer using CSB-PA017818LA01HU at dilution of 1:100



Immunofluorescent analysis of HepG2 cells using CSB-PA017818LA01HU at dilution of 1:100 and Alexa Fluor 488-conjugated AffiniPure Goat Anti-Rabbit IgG(H+L)

**Western Blot**

Positive WB detected in: K562 whole cell lysate, Rat kidney tissue, Rat brain tissue  
All lanes: PFKFB2 antibody at 3µg/ml  
Secondary  
Goat polyclonal to rabbit IgG at 1/50000 dilution  
Predicted band size: 59, 55 kDa  
Observed band size: 55 kDa

**Usage**

For Research Use Only. Not for use in diagnostic or therapeutic procedures.