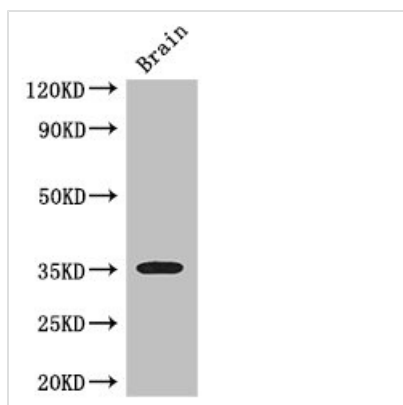




SFRP1 Antibody

Product Code	CSB-PA021138LA01HU
Storage	Upon receipt, store at -20°C or -80°C. Avoid repeated freeze.
Uniprot No.	Q8N474
Immunogen	Recombinant Human Secreted frizzled-related protein 1 protein (170-240AA)
Raised In	Rabbit
Species Reactivity	Human, Mouse
Tested Applications	ELISA, WB, IHC, IF; Recommended dilution: WB:1:500-1:5000, IHC:1:500-1:1000, IF:1:50-1:500
Form	Liquid
Conjugate	Non-conjugated
Storage Buffer	Preservative: 0.03% Proclin 300 Constituents: 50% Glycerol, 0.01M PBS, PH 7.4
Purification Method	>95%, Protein G purified
Isotype	IgG
Clonality	Polyclonal
Alias	Secreted frizzled-related protein 1 (FRP-1) (sFRP-1) (Secreted apoptosis-related protein 2) (SARP-2), SFRP1, FRP FRP1 SARP2
Immunogen Species	Homo sapiens (Human)
Research Area	Cell Biology
Target Names	SFRP1

Image



Western Blot

Positive WB detected in: Mouse brain tissue

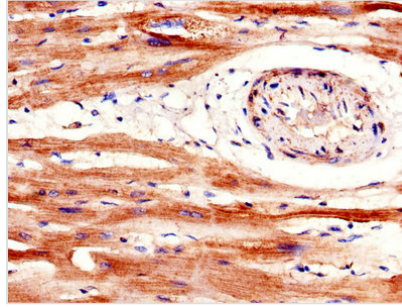
All lanes: SFRP1 antibody at 3µg/ml

Secondary

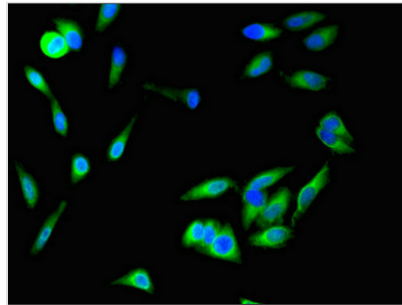
Goat polyclonal to rabbit IgG at 1/50000 dilution

Predicted band size: 36 kDa

Observed band size: 36 kDa



IHC image of CSB-PA021138LA01HU diluted at 1:600 and staining in paraffin-embedded human heart tissue performed on a Leica Bond™ system. After dewaxing and hydration, antigen retrieval was mediated by high pressure in a citrate buffer (pH 6.0). Section was blocked with 10% normal goat serum 30min at RT. Then primary antibody (1% BSA) was incubated at 4°C overnight. The primary is detected by a biotinylated secondary antibody and visualized using an HRP conjugated SP system.



Immunofluorescent analysis of HeLa cells using CSB-PA021138LA01HU at dilution of 1:100 and Alexa Fluor 488-conjugated AffiniPure Goat Anti-Rabbit IgG(H+L)