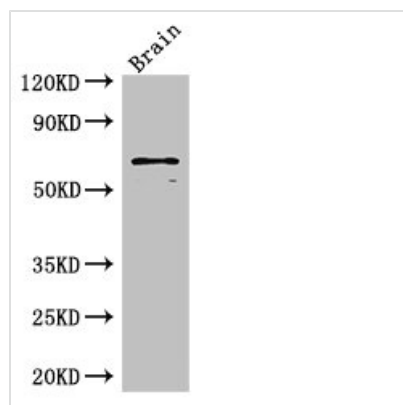




SLC6A3 Antibody

Product Code	CSB-PA021701LA01HU
Storage	Upon receipt, store at -20°C or -80°C. Avoid repeated freeze.
Uniprot No.	Q01959
Immunogen	Recombinant Human Sodium-dependent dopamine transporter protein (161-237AA)
Raised In	Rabbit
Species Reactivity	Human, Mouse
Tested Applications	ELISA, WB, IF; Recommended dilution: WB:1:2000-1:10000, IF:1:50-1:200
Form	Liquid
Conjugate	Non-conjugated
Storage Buffer	Preservative: 0.03% Proclin 300 Constituents: 50% Glycerol, 0.01M PBS, PH 7.4
Purification Method	>95%, Protein G purified
Isotype	IgG
Clonality	Polyclonal
Alias	Sodium-dependent dopamine transporter (DA transporter) (DAT) (Solute carrier family 6 member 3), SLC6A3, DAT1
Immunogen Species	Homo sapiens (Human)
Research Area	Neuroscience
Target Names	SLC6A3

Image



Western Blot

Positive WB detected in: Mouse brain tissue

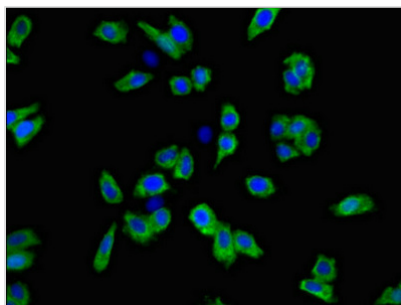
All lanes: SLC6A3 antibody at 3µg/ml

Secondary

Goat polyclonal to rabbit IgG at 1/50000 dilution

Predicted band size: 69 kDa

Observed band size: 69 kDa



Immunofluorescent analysis of HepG2 cells using CSB-PA021701LA01HU at dilution of 1:100 and Alexa Fluor 488-conjugated AffiniPure Goat Anti-Rabbit IgG(H+L)