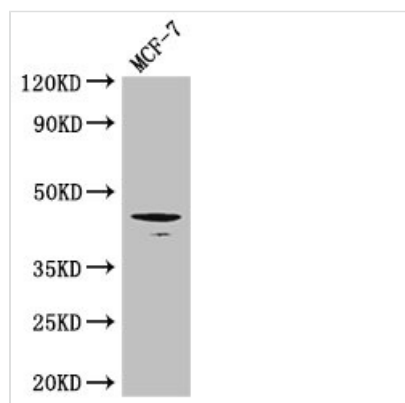




# Tgfb1 Antibody

<b>Product Code</b>	CSB-PA023446LA01MO
<b>Storage</b>	Upon receipt, store at -20°C or -80°C. Avoid repeated freeze.
<b>Uniprot No.</b>	P04202
<b>Immunogen</b>	Recombinant Mouse Transforming growth factor beta-1 protein (30-278AA)
<b>Raised In</b>	Rabbit
<b>Species Reactivity</b>	Mouse, Human
<b>Tested Applications</b>	ELISA, WB, IP; Recommended dilution: WB:1:500-1:5000, IP:1:200-1:2000
<b>Form</b>	Liquid
<b>Conjugate</b>	Non-conjugated
<b>Storage Buffer</b>	Preservative: 0.03% Proclin 300 Constituents: 50% Glycerol, 0.01M PBS, PH 7.4
<b>Purification Method</b>	>95%, Protein G purified
<b>Isotype</b>	IgG
<b>Clonality</b>	Polyclonal
<b>Alias</b>	Transforming growth factor beta-1 (TGF-beta-1) [Cleaved into: Latency-associated peptide (LAP)], Tgfb1
<b>Immunogen Species</b>	Mus musculus (Mouse)
<b>Research Area</b>	Cardiovascular
<b>Target Names</b>	Tgfb1

## Image



### Western Blot

Positive WB detected in: MCF-7 whole cell lysate

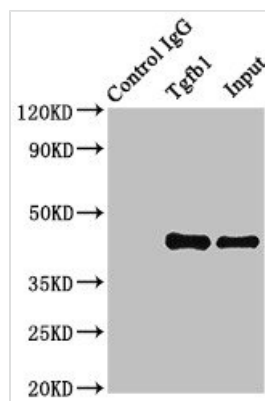
All lanes: Tgfb1 antibody at 3μg/ml

Secondary

Goat polyclonal to rabbit IgG at 1/50000 dilution

Predicted band size: 45 kDa

Observed band size: 45 kDa



Immunoprecipitating Tgfb1 in MCF-7 whole cell lysate

Lane 1: Rabbit control IgG instead of (1 $\mu$ g) instead of CSB-PA023446LA01MO in MCF-7 whole cell lysate. For western blotting, a HRP-conjugated Protein G antibody was used as the secondary antibody (1/2000)

Lane 2: CSB-PA023446LA01MO (8 $\mu$ g) + MCF-7 whole cell lysate (500 $\mu$ g)

Lane 3: MCF-7 whole cell lysate (10 $\mu$ g)