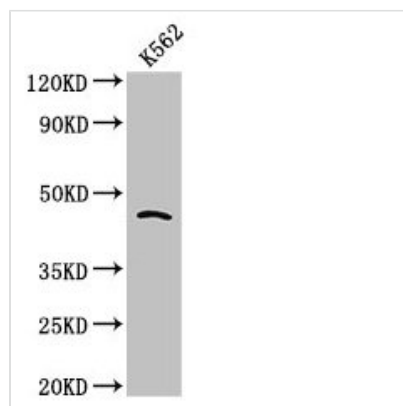




CDC37 Antibody

Product Code	CSB-PA613684LA01HU
Storage	Upon receipt, store at -20°C or -80°C. Avoid repeated freeze.
Uniprot No.	Q16543
Immunogen	Recombinant Human Hsp90 co-chaperone Cdc37 protein (89-175AA)
Raised In	Rabbit
Species Reactivity	Human
Tested Applications	ELISA, WB, IHC, IF; Recommended dilution: WB:1:500-1:5000, IHC:1:20-1:200, IF:1:50-1:200
Form	Liquid
Conjugate	Non-conjugated
Storage Buffer	Preservative: 0.03% Proclin 300 Constituents: 50% Glycerol, 0.01M PBS, PH 7.4
Purification Method	>95%, Protein G purified
Isotype	IgG
Clonality	Polyclonal
Alias	Hsp90 co-chaperone Cdc37 (Hsp90 chaperone protein kinase-targeting subunit) (p50Cdc37) [Cleaved into: Hsp90 co-chaperone Cdc37, N-terminally processed], CDC37, CDC37A
Immunogen Species	Homo sapiens (Human)
Research Area	Cell Biology
Target Names	CDC37

Image



Western Blot

Positive WB detected in: K562 whole cell lysate

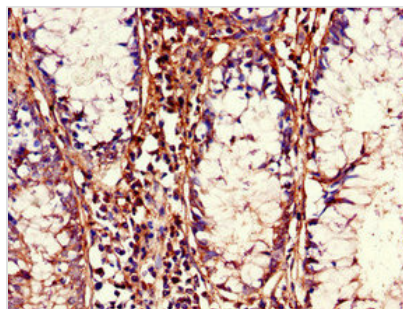
All lanes: CDC37 antibody at 2.7µg/ml

Secondary

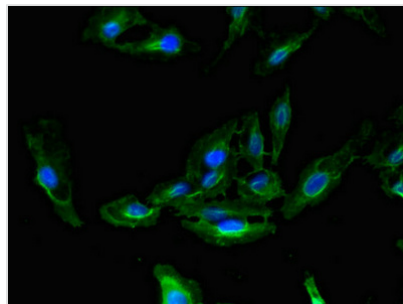
Goat polyclonal to rabbit IgG at 1/50000 dilution

Predicted band size: 45 kDa

Observed band size: 45 kDa



Immunohistochemistry of paraffin-embedded human colon cancer using CSB-PA613684LA01HU at dilution of 1:100



Immunofluorescent analysis of HeLa cells using CSB-PA613684LA01HU at dilution of 1:100 and Alexa Fluor 488-conjugated AffiniPure Goat Anti-Rabbit IgG(H+L)