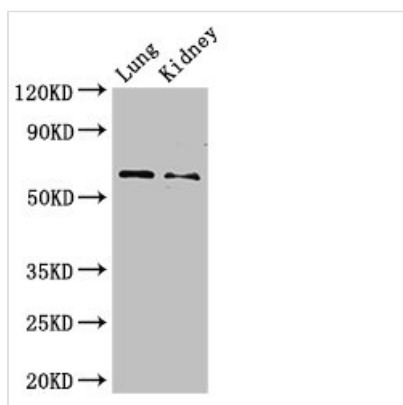




Plbd2 Antibody

Product Code	CSB-PA683927LA01RA
Storage	Upon receipt, store at -20°C or -80°C. Avoid repeated freeze.
Uniprot No.	Q4QQW8
Immunogen	Recombinant Rat Putative phospholipase B-like 2 protein (36-585AA)
Raised In	Rabbit
Species Reactivity	Rat, Mouse
Tested Applications	ELISA, WB; Recommended dilution: WB:1:500-1:5000
Form	Liquid
Conjugate	Non-conjugated
Storage Buffer	Preservative: 0.03% Proclin 300 Constituents: 50% Glycerol, 0.01M PBS, PH 7.4
Purification Method	>95%, Protein G purified
Isotype	IgG
Clonality	Polyclonal
Alias	Putative phospholipase B-like 2 (EC 3.1.1.-) (LAMA-like protein 2) (Lamina ancestor homolog 2) (Phospholipase B domain-containing protein 2), Plbd2
Immunogen Species	Rattus norvegicus (Rat)
Research Area	Signal Transduction
Target Names	Plbd2

Image



Western Blot

Positive WB detected in: Mouse lung tissue,
Mouse kidney tissue

All lanes: Plbd2 antibody at 3µg/ml

Secondary

Goat polyclonal to rabbit IgG at 1/50000 dilution

Predicted band size: 66 kDa

Observed band size: 66 kDa

Usage

For Research Use Only. Not for use in diagnostic or therapeutic procedures.