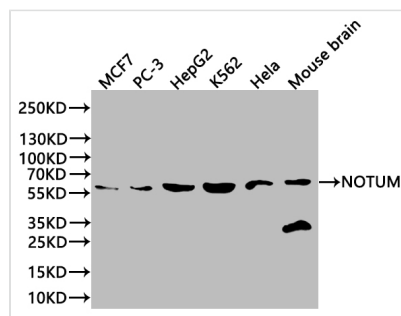




NOTUM Antibody

Product Code	CSB-PA747435LA01HU
Storage	Upon receipt, store at -20°C or -80°C. Avoid repeated freeze.
Uniprot No.	Q6P988
Immunogen	Recombinant Human Palmitoleoyl-protein carboxylesterase NOTUM protein
Raised In	Rabbit
Species Reactivity	Human, Mouse
Tested Applications	ELISA, WB; Recommended dilution: WB:1:500-1:5000
Form	Liquid
Conjugate	Non-conjugated
Storage Buffer	PBS with 0.02% sodium azide and 50% glycerol pH 7.3.
Purification Method	Antigen affinity purification
Isotype	IgG
Clonality	Polyclonal
Product Type	Polyclonal Antibody
Immunogen Species	Homo sapiens (Human)
Research Area	Neuroscience
Target Names	NOTUM

Image



Western Blot

Positive WB detected in: MCF7 whole cell lysate(20µg), PC-3 whole cell lysate(20µg), HepG2 whole cell lysate(20µg), K562 whole cell lysate(20µg), HeLa whole cell lysate(20µg), Mouse Brain tissue lysate(20µg)

All lanes: NOTUM antibody at 1:1000

Secondary

Goat polyclonal to rabbit IgG at 1/50000 dilution

Predicted band size: 56 kDa

Observed band size: 56 kDa

Exposure time: 120s

Usage

For Research Use Only. Not for use in diagnostic or therapeutic procedures.