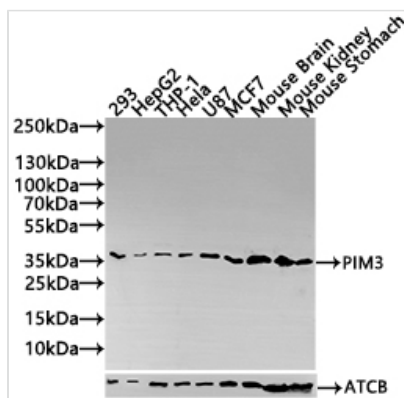




PIM3 Antibody

Product Code	CSB-PA771444LA01HU
Storage	Upon receipt, store at -20°C or -80°C. Avoid repeated freeze.
Uniprot No.	Q86V86
Immunogen	Synthesized peptide derived from human PIM3
Raised In	Rabbit
Species Reactivity	Human, Mouse
Tested Applications	ELISA, WB; Recommended dilution: WB:1:500-1:2000
Form	Liquid
Storage Buffer	Liquid in PBS containing 50% glycerol, 0.5% BSA and 0.02% sodium azide.
Purification Method	Antigen affinity purification
Isotype	IgG
Clonality	Polyclonal
Product Type	Polyclonal Antibody
Immunogen Species	Homo sapiens (Human)
Research Area	Signal Transduction
Target Names	PIM3

Image



Western Blot

Positive WB detected in: 293 whole cell lysate(30µg), HepG2 whole cell lysate(30µg), THP-1 whole cell lysate(30µg), Hela whole cell lysate(30µg), U87 whole cell lysate(30µg), MCF7 whole cell lysate(30µg), Mouse Brain tissue lysate(30µg), Mouse Kidney tissue lysate(30µg), Mouse Stomach tissue lysate(30µg)

All lanes: PIM3 antibody at 1:1000
 Secondary
 Goat polyclonal to rabbit IgG at 1/20000 dilution
 Predicted band size: 36 kDa
 Observed band size: 36 kDa
 Exposure time: 120s

Usage

For Research Use Only. Not for use in diagnostic or therapeutic procedures.