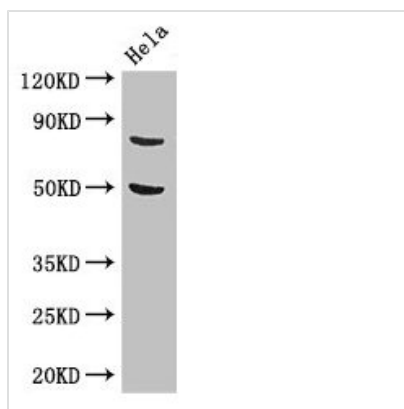




KBTBD6 Antibody

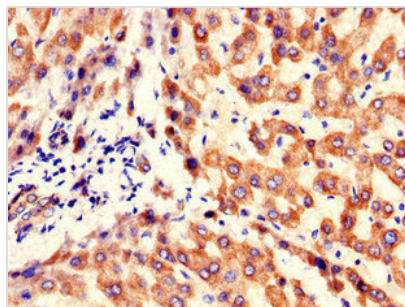
Product Code	CSB-PA774812LA01HU
Storage	Upon receipt, store at -20°C or -80°C. Avoid repeated freeze.
Uniprot No.	Q86V97
Immunogen	Recombinant Human Kelch repeat and BTB domain-containing protein 6 protein (1-139AA)
Raised In	Rabbit
Species Reactivity	Human
Tested Applications	ELISA, WB, IHC, IF; Recommended dilution: WB:1:500-1:5000, IHC:1:20-1:200, IF:1:50-1:200
Form	Liquid
Conjugate	Non-conjugated
Storage Buffer	Preservative: 0.03% Proclin 300 Constituents: 50% Glycerol, 0.01M PBS, PH 7.4
Purification Method	>95%, Protein G purified
Isotype	IgG
Clonality	Polyclonal
Alias	Kelch repeat and BTB domain-containing protein 6, KBTBD6
Immunogen Species	Homo sapiens (Human)
Research Area	Others
Target Names	KBTBD6

Image

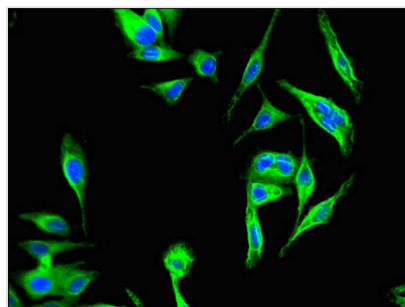


Western Blot

Positive WB detected in: HeLa whole cell lysate
 All lanes: KBTBD6 antibody at 3.4µg/ml
 Secondary
 Goat polyclonal to rabbit IgG at 1/50000 dilution
 Predicted band size: 77 kDa
 Observed band size: 77 kDa



Immunohistochemistry of paraffin-embedded human liver tissue using CSB-PA774812LA01HU at dilution of 1:100



Immunofluorescent analysis of HeLa cells using CSB-PA774812LA01HU at dilution of 1:100 and Alexa Fluor 488-conjugated AffiniPure Goat Anti-Rabbit IgG(H+L)

Usage

For Research Use Only. Not for use in diagnostic or therapeutic procedures.