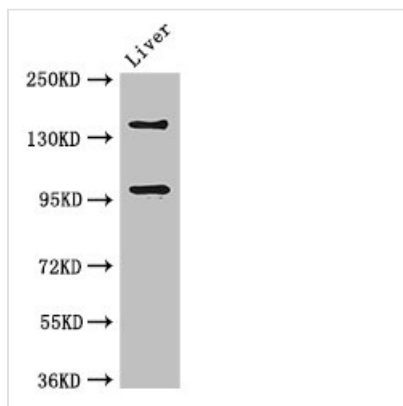




PHLDB2 Antibody

Product Code	CSB-PA803110LA01HU
Storage	Upon receipt, store at -20°C or -80°C. Avoid repeated freeze.
Uniprot No.	Q86SQ0
Immunogen	Recombinant Human Pleckstrin homology-like domain family B member 2 protein (734-1030AA)
Raised In	Rabbit
Species Reactivity	Human, Mouse
Tested Applications	ELISA, WB, IHC, IF; Recommended dilution: WB:1:500-1:5000, IHC:1:20-1:200, IF:1:50-1:200
Form	Liquid
Conjugate	Non-conjugated
Storage Buffer	Preservative: 0.03% Proclin 300 Constituents: 50% Glycerol, 0.01M PBS, PH 7.4
Purification Method	>95%, Protein G purified
Isotype	IgG
Clonality	Polyclonal
Alias	Pleckstrin homology-like domain family B member 2 (Protein LL5-beta), PHLDB2, LL5B
Immunogen Species	Homo sapiens (Human)
Research Area	Signal Transduction
Target Names	PHLDB2

Image



Western Blot

Positive WB detected in: Mouse liver tissue

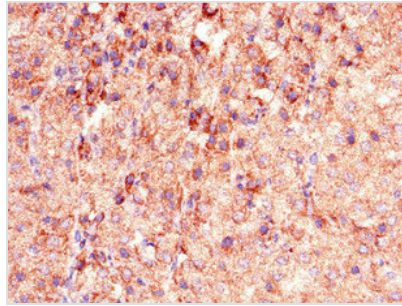
All lanes: PHLDB2 antibody at 3µg/ml

Secondary

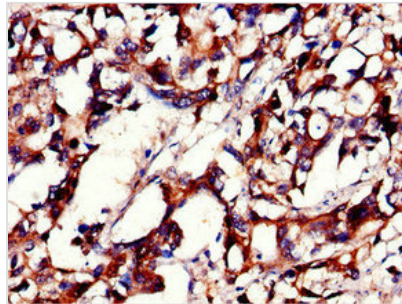
Goat polyclonal to rabbit IgG at 1/50000 dilution

Predicted band size: 143, 137, 140 kDa

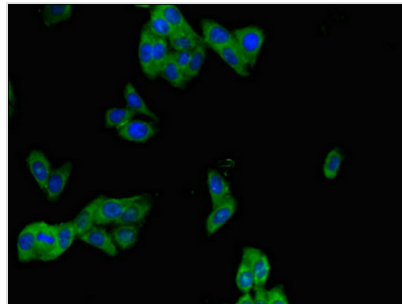
Observed band size: 143, 96 kDa



Immunohistochemistry of paraffin-embedded human adrenal gland tissue using CSB-PA803110LA01HU at dilution of 1:100



Immunohistochemistry of paraffin-embedded human gastric cancer using CSB-PA803110LA01HU at dilution of 1:100



Immunofluorescent analysis of HepG2 cells using CSB-PA803110LA01HU at dilution of 1:100 and Alexa Fluor 488-conjugated AffiniPure Goat Anti-Rabbit IgG(H+L)