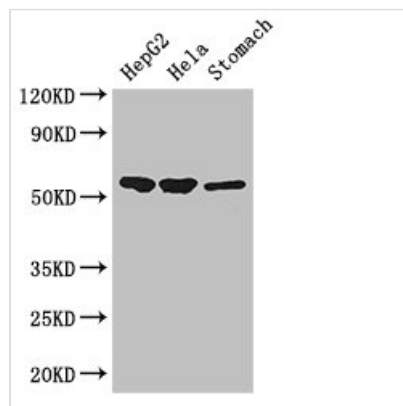




SLC37A2 Antibody

Product Code	CSB-PA819478LA01HU
Storage	Upon receipt, store at -20°C or -80°C. Avoid repeated freeze.
Uniprot No.	Q8TED4
Immunogen	Recombinant Human Glucose-6-phosphate exchanger SLC37A2 protein (46-84AA)
Raised In	Rabbit
Species Reactivity	Human, Mouse
Tested Applications	ELISA, WB, IHC, IF; Recommended dilution: WB:1:500-1:5000, IHC:1:20-1:200, IF:1:50-1:200
Form	Liquid
Conjugate	Non-conjugated
Storage Buffer	Preservative: 0.03% Proclin 300 Constituents: 50% Glycerol, 0.01M PBS, PH 7.4
Purification Method	>95%, Protein G purified
Isotype	IgG
Clonality	Polyclonal
Alias	Glucose-6-phosphate exchanger SLC37A2 (Solute carrier family 37 member 2), SLC37A2
Immunogen Species	Homo sapiens (Human)
Research Area	Others
Target Names	SLC37A2

Image



Western Blot

Positive WB detected in: HepG2 whole cell lysate, HeLa whole cell lysate, Mouse stomach tissue

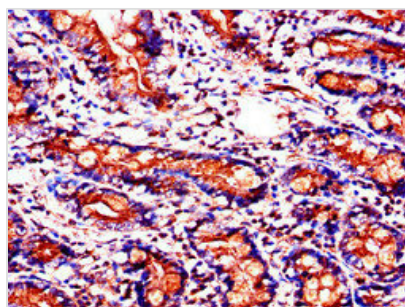
All lanes: SLC37A2 antibody at 3µg/ml

Secondary

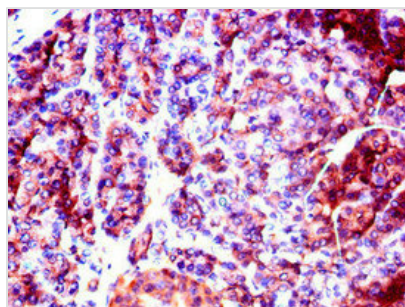
Goat polyclonal to rabbit IgG at 1/50000 dilution

Predicted band size: 55, 43, 14 kDa

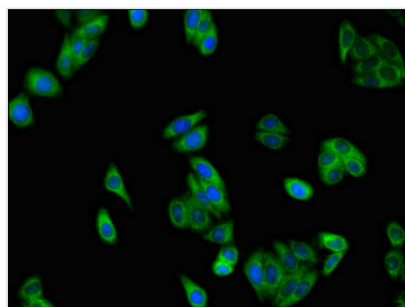
Observed band size: 55 kDa



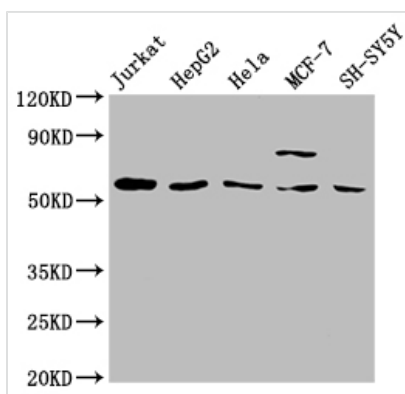
Immunohistochemistry of paraffin-embedded human small intestine tissue using CSB-PA819478LA01HU at dilution of 1:100



Immunohistochemistry of paraffin-embedded human pancreatic tissue using CSB-PA819478LA01HU at dilution of 1:100



Immunofluorescent analysis of HepG2 cells using CSB-PA819478LA01HU at dilution of 1:100 and Alexa Fluor 488-conjugated AffiniPure Goat Anti-Rabbit IgG(H+L)



Western Blot

Positive WB detected in: Jurkat whole cell lysate, HepG2 whole cell lysate, HeLa whole cell lysate, MCF-7 whole cell lysate, SH-SY5Y whole cell lysate

All lanes: SLC37A2 antibody at 1:2000

Secondary

Goat polyclonal to rabbit IgG at 1/50000 dilution

Predicted band size: 55, 43, 14 kDa

Observed band size: 55 kDa

Usage

For Research Use Only. Not for use in diagnostic or therapeutic procedures.