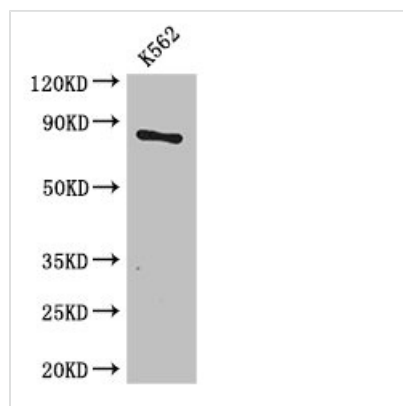




CPT1B Antibody

Product Code	CSB-PA821674LA01HU
Storage	Upon receipt, store at -20°C or -80°C. Avoid repeated freeze.
Uniprot No.	Q92523
Immunogen	Recombinant Human Carnitine O-palmitoyltransferase 1, muscle isoform protein (165-318AA)
Raised In	Rabbit
Species Reactivity	Human
Tested Applications	ELISA, WB, IHC, IF; Recommended dilution: WB:1:500-1:5000, IHC:1:20-1:200, IF:1:50-1:200
Form	Liquid
Conjugate	Non-conjugated
Storage Buffer	Preservative: 0.03% Proclin 300 Constituents: 50% Glycerol, 0.01M PBS, PH 7.4
Purification Method	>95%, Protein G purified
Isotype	IgG
Clonality	Polyclonal
Alias	Carnitine O-palmitoyltransferase 1, muscle isoform (CPT1-M) (EC 2.3.1.21) (Carnitine O-palmitoyltransferase I, muscle isoform) (CPT I) (CPTI-M) (Carnitine palmitoyltransferase 1B) (Carnitine palmitoyltransferase I-like protein), CPT1B, KIAA1670
Immunogen Species	Homo sapiens (Human)
Research Area	Signal Transduction
Target Names	CPT1B

Image



Western Blot

Positive WB detected in: K562 whole cell lysate

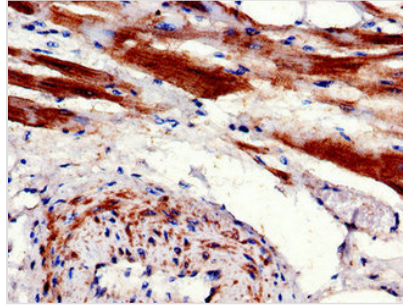
All lanes: CPT1B antibody at 3.4µg/ml

Secondary

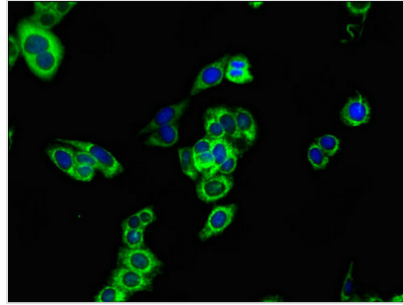
Goat polyclonal to rabbit IgG at 1/50000 dilution

Predicted band size: 88, 67, 84, 79 kDa

Observed band size: 88 kDa



Immunohistochemistry of paraffin-embedded human heart tissue using CSB-PA821674LA01HU at dilution of 1:100



Immunofluorescent analysis of HepG2 cells using CSB-PA821674LA01HU at dilution of 1:100 and Alexa Fluor 488-conjugated AffiniPure Goat Anti-Rabbit IgG(H+L)

Usage

For Research Use Only. Not for use in diagnostic or therapeutic procedures.