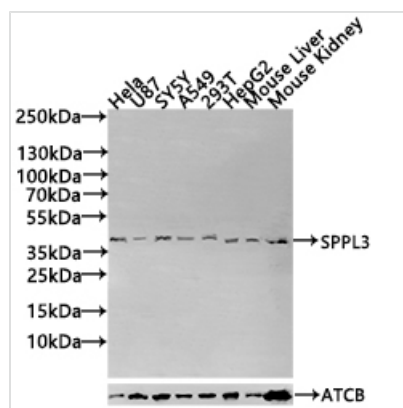




# SPPL3 Antibody

<b>Product Code</b>	CSB-PA848402LA01HU
<b>Storage</b>	Upon receipt, store at -20°C or -80°C. Avoid repeated freeze.
<b>Uniprot No.</b>	Q8TCT6
<b>Immunogen</b>	Recombinant Human Signal peptide peptidase-like 3 protein (213-263AA)
<b>Raised In</b>	Rabbit
<b>Species Reactivity</b>	Human, Mouse, Rat
<b>Tested Applications</b>	ELISA, WB; Recommended dilution: WB:1:500-1:2000
<b>Form</b>	Liquid
<b>Conjugate</b>	Non-conjugated
<b>Storage Buffer</b>	Preservative: 0.03% Proclin 300 Constituents: 50% Glycerol, 0.01M PBS, PH 7.4
<b>Purification Method</b>	>95%, Protein G purified
<b>Isotype</b>	IgG
<b>Clonality</b>	Polyclonal
<b>Product Type</b>	Polyclonal Antibody
<b>Immunogen Species</b>	Homo sapiens (Human)
<b>Research Area</b>	Cell Biology
<b>Target Names</b>	SPPL3

## Image



### Western Blot

Positive WB detected in: HeLa whole cell lysate(30µg), U87 whole cell lysate(30µg), SY5Y whole cell lysate(30µg), A549 whole cell lysate(30µg), 293T whole cell lysate(30µg), HepG2 whole cell lysate(30µg), Mouse Liver tissue lysate(30µg), Mouse Kidney tissue lysate(30µg)

All lanes: SPPL3 antibody at 1:1000

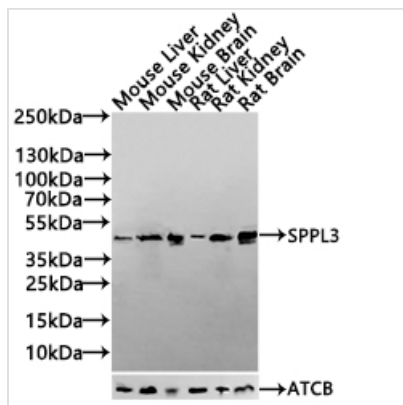
Secondary

Goat polyclonal to rabbit IgG at 1/40000 dilution

Predicted band size: 43,19 kDa

Observed band size: 43 kDa

Exposure time: 120s

**Western Blot**

Positive WB detected in: Mouse Liver tissue lysate(30µg), Mouse Kidney tissue lysate(30µg), Mouse Brain tissue lysate(30µg), Rat Liver tissue lysate(30µg), Rat Kidney tissue lysate(30µg), Rat Brain tissue lysate(30µg)

All lanes: SPPL3 antibody at 1:1000

Secondary

Goat polyclonal to rabbit IgG at 1/40000 dilution

Predicted band size: 43,19 kDa

Observed band size: 43kDa

Exposure time: 3s

**Usage**

For Research Use Only. Not for use in diagnostic or therapeutic procedures.