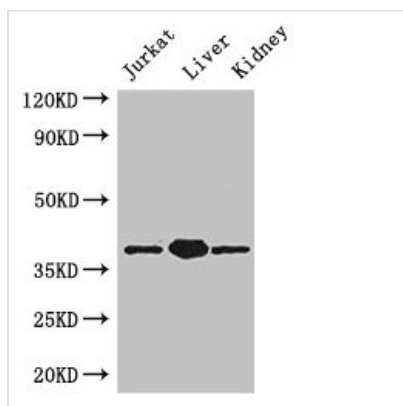




PINX1 Antibody

Product Code	CSB-PA850264LA01HU
Storage	Upon receipt, store at -20°C or -80°C. Avoid repeated freeze.
Uniprot No.	Q96BK5
Immunogen	Recombinant Human PIN2/TERF1-interacting telomerase inhibitor 1 protein (151-299AA)
Raised In	Rabbit
Species Reactivity	Human, Mouse
Tested Applications	ELISA, WB; Recommended dilution: WB:1:500-1:5000
Form	Liquid
Conjugate	Non-conjugated
Storage Buffer	Preservative: 0.03% Proclin 300 Constituents: 50% Glycerol, 0.01M PBS, PH 7.4
Purification Method	>95%, Protein G purified
Isotype	IgG
Clonality	Polyclonal
Alias	PIN2/TERF1-interacting telomerase inhibitor 1 (Liver-related putative tumor suppressor) (Pin2-interacting protein X1) (Protein 67-11-3) (TRF1-interacting protein 1), PINX1, LPTL LPTS
Immunogen Species	Homo sapiens (Human)
Research Area	Epigenetics and Nuclear Signaling
Target Names	PINX1

Image



Western Blot

Positive WB detected in: Jurkat whole cell lysate, Mouse liver tissue, Mouse kidney tissue
 All lanes: PINX1 antibody at 3.4µg/ml
 Secondary
 Goat polyclonal to rabbit IgG at 1/50000 dilution
 Predicted band size: 38, 20 kDa
 Observed band size: 38 kDa

Usage

For Research Use Only. Not for use in diagnostic or therapeutic procedures.