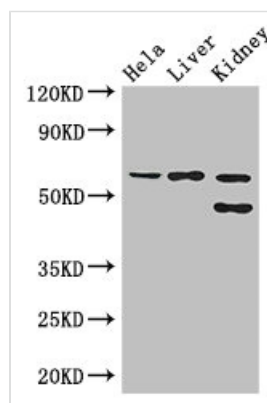




EHD2 Antibody

| | |
|----------------------------|--|
| Product Code | CSB-PA873710LA01HU |
| Storage | Upon receipt, store at -20°C or -80°C. Avoid repeated freeze. |
| Uniprot No. | Q9NZN4 |
| Immunogen | Recombinant Human EH domain-containing protein 2 protein (401-543AA) |
| Raised In | Rabbit |
| Species Reactivity | Human, Mouse |
| Tested Applications | ELISA, WB, IHC, IF; Recommended dilution: WB:1:500-1:5000, IHC:1:20-1:200, IF:1:50-1:200 |
| Form | Liquid |
| Conjugate | Non-conjugated |
| Storage Buffer | Preservative: 0.03% Proclin 300 Constituents: 50% Glycerol, 0.01M PBS, PH 7.4 |
| Purification Method | >95%, Protein G purified |
| Isotype | IgG |
| Clonality | Polyclonal |
| Alias | EH domain-containing protein 2 (PAST homolog 2), EHD2, PAST2 |
| Immunogen Species | Homo sapiens (Human) |
| Research Area | Epigenetics and Nuclear Signaling |
| Target Names | EHD2 |

Image



Western Blot

Positive WB detected in: HeLa whole cell lysate, Mouse liver tissue, Mouse kidney tissue

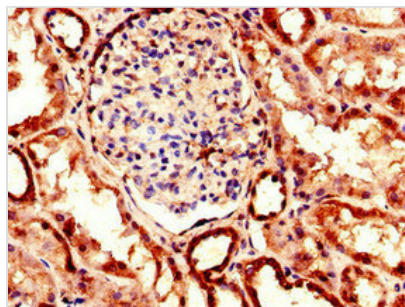
All lanes: EHD2 antibody at 3μg/ml

Secondary

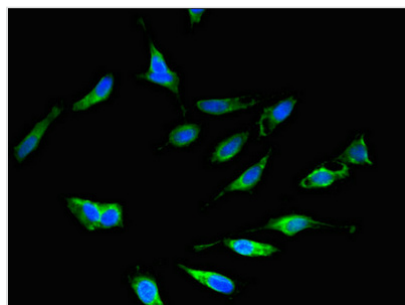
Goat polyclonal to rabbit IgG at 1/50000 dilution

Predicted band size: 62, 47 kDa

Observed band size: 62, 47 kDa



Immunohistochemistry of paraffin-embedded human kidney tissue using CSB-PA873710LA01HU at dilution of 1:100



Immunofluorescent analysis of HeLa cells using CSB-PA873710LA01HU at dilution of 1:100 and Alexa Fluor 488-conjugated AffiniPure Goat Anti-Rabbit IgG(H+L)