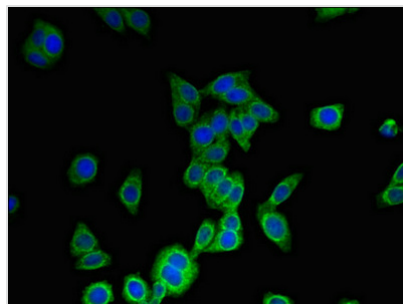




# MS4A6A Antibody

<b>Product Code</b>	CSB-PA875659LA01HU
<b>Storage</b>	Upon receipt, store at -20°C or -80°C. Avoid repeated freeze.
<b>Uniprot No.</b>	Q9H2W1
<b>Immunogen</b>	Recombinant Human Membrane-spanning 4-domains subfamily A member 6A protein (1-36AA)
<b>Raised In</b>	Rabbit
<b>Species Reactivity</b>	Human
<b>Tested Applications</b>	ELISA, IF; Recommended dilution: IF:1:50-1:200
<b>Form</b>	Liquid
<b>Conjugate</b>	Non-conjugated
<b>Storage Buffer</b>	Preservative: 0.03% Proclin 300 Constituents: 50% Glycerol, 0.01M PBS, PH 7.4
<b>Purification Method</b>	>95%, Protein G purified
<b>Isotype</b>	IgG
<b>Clonality</b>	Polyclonal
<b>Alias</b>	Membrane-spanning 4-domains subfamily A member 6A (CD20 antigen-like 3) (Four-span transmembrane protein 3), MS4A6A, 4SPAN3 CD20L3 MS4A6
<b>Immunogen Species</b>	Homo sapiens (Human)
<b>Research Area</b>	Signal Transduction
<b>Target Names</b>	MS4A6A

## Image



Immunofluorescent analysis of HepG2 cells using CSB-PA875659LA01HU at dilution of 1:100 and Alexa Fluor 488-conjugated AffiniPure Goat Anti-Rabbit IgG(H+L)

## Usage

For Research Use Only. Not for use in diagnostic or therapeutic procedures.