

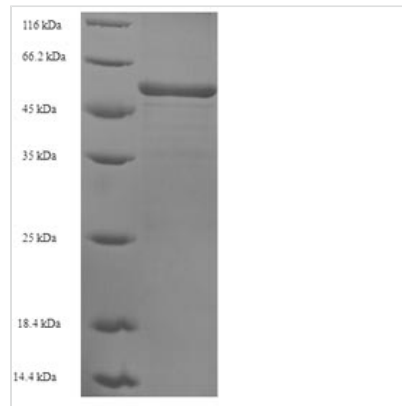


Recombinant Human Sarcoplasmic/endoplasmic reticulum calcium ATPase 2 (ATP2A2), partial

Product Code	CSB-EP002333HU
Relevance	This magnesium-dependent enzyme catalyzes the hydrolysis of ATP coupled with the translocation of calcium from the cytosol to the sarcoplasmic reticulum lumen. Isoform 2 is involved in the regulation of the contraction/relaxation cycle.
Abbreviation	Recombinant Human ATP2A2 protein, partial
Storage	The shelf life is related to many factors, storage state, buffer ingredients, storage temperature and the stability of the protein itself. Generally, the shelf life of liquid form is 6 months at -20°C/-80°C. The shelf life of lyophilized form is 12 months at -20°C/-80°C.
Uniprot No.	P16615
Product Type	Recombinant Proteins
Immunogen Species	Homo sapiens (Human)
Purity	Greater than 90% as determined by SDS-PAGE.
Sequence	VITTCLALGTRRMAKKNAIVRSLPSVETLGCTSVICSDKTGTLTTNQMSVCRMFI LDRVEGDTCSLNEFTITGSTYAPIGEVHKDDKPVNCHQYDGLVELATICALCND SALDYNEAKGVYEKVGEEATETALTCLVEKMNVFDTELKGLSKIERANACNSVIK QLMKKEFTLEFSRDRKSMSVYCTPNKPSRTSMSKMFVKGAPEGVIDRCTHIRV GSTKVPMTSGVKQKIMSVIREWGSSTLRLCLALATHDNPLRREEMHLEDSA NFIKYETNLTFVGCVGMLDPPRIEVASSVKLCRQAGIRVIMITGDNKGTAVAICR RIGIFGQDEDEVTSKAFTGREFDELNPSAQRDAACLNARCFARVEPSHKSKIVEFL QSFDEITAMTGDGVNDAPALKKAEIGIAMGSGTAVAKTASEMVLADDNFSTIVA AVEEGRAIYNNM
Research Area	Cardiovascular
Source	E.coli
Target Names	ATP2A2
Protein Names	Recommended name: Sarcoplasmic/endoplasmic reticulum calcium ATPase 2 Short name= SERCA2 Short name= SR Ca(2+)-ATPase 2 EC= 3.6.3.8Alternative name(s): Calcium pump 2 Calcium-transporting ATPase sarcoplasmic reticulum type, slow
Expression Region	314-756aa
Notes	Repeated freezing and thawing is not recommended. Store working aliquots at 4°C for up to one week.
Tag Info	N-terminal 6xHis-tagged
Mol. Weight	52.3kDa
Protein Length	Partial



Image



(Tris-Glycine gel) Discontinuous SDS-PAGE (reduced) with 5% enrichment gel and 15% separation gel.

Shelf Life

The shelf life is related to many factors, storage state, buffer ingredients, storage temperature and the stability of the protein itself.

Generally, the shelf life of liquid form is 6 months at -20°C/-80°C. The shelf life of lyophilized form is 12 months at -20°C/-80°C.