



# Recombinant Human Dihydrolipoyllysine-residue acetyltransferase component of pyruvate dehydrogenase complex, mitochondrial (DLAT), partial

<b>Product Code</b>	CSB-EP006926HU
<b>Relevance</b>	The pyruvate dehydrogenase complex catalyzes the overall conversion of pyruvate to acetyl-CoA and CO <sub>2</sub> , and thereby links the glycolytic pathway to the tricarboxylic cycle.
<b>Abbreviation</b>	Recombinant Human DLAT protein, partial
<b>Storage</b>	The shelf life is related to many factors, storage state, buffer ingredients, storage temperature and the stability of the protein itself. Generally, the shelf life of liquid form is 6 months at -20°C/-80°C. The shelf life of lyophilized form is 12 months at -20°C/-80°C.
<b>Uniprot No.</b>	P10515
<b>Alias</b>	70 kDa mitochondrial autoantigen of primary biliary cirrhosis ;PBCDihydrolipoamide acetyltransferase component of pyruvate dehydrogenase complexM2 antigen complex 70 kDa subunitPyruvate dehydrogenase complex component E2 ;PDC-E2 ;PDCE2
<b>Product Type</b>	Recombinant Protein
<b>Immunogen Species</b>	Homo sapiens (Human)
<b>Purity</b>	≥ 90% as determined by SDS-PAGE.
<b>Sequence</b>	KVPLPSLSPTMQAGTIARWEKKEGDKINEGDLIAEVETDKATVGFESLEECYM AKILVAEGTRDVPVIGAIICITVGPEDIEAFKNYTLDSAAPTPQAAPAPTPAATA SPPTPSAQAPGSSYPPHMQVLLPALSPMTMTMGTVQRWEKKVGEKLSEGDLA EIETDKATIGFEVQEEGYLAKILVPEGTRDVPLGTPLCIIVEKEADISAFADYRPT EVTDLKPQVPPPTPPPVAAVPPTPQPLAPTPSAPCPATPAGPKGRVFSPLAK KLAVEKIDLTQVKGTGPDGRITKKDIDSFVPSKVAPAAVPPPTGPGMAPVP TGVFTDIPISNIRRVIAQRLMQSKQTIPHYLSIDVNMGEVLLVRKELNKILEGRS KISVNDFIKASALACLKVPEANSSWMDTVIRQNHVVDVSVAVSTPAGLITPIVF NAHIKGVETIANDVSLATKAREGKLQPHEFQGGTFTISNLGMFGIKNFSAIINP PQACILAIGASEDKLVPADNEKGFVASMMSVTLSCDHRVVDGAVGAQWLAE FRKYLE
<b>Research Area</b>	Metabolism
<b>Source</b>	E.coli
<b>Target Names</b>	DLAT
<b>Expression Region</b>	93-640aa
<b>Notes</b>	Repeated freezing and thawing is not recommended. Store working aliquots at



4°C for up to one week.

**Tag Info**

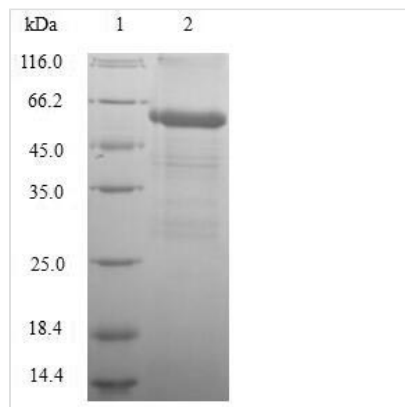
N-terminal 6xHis-tagged

**Mol. Weight**

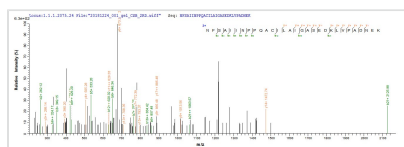
62.2kDa

**Protein Length**

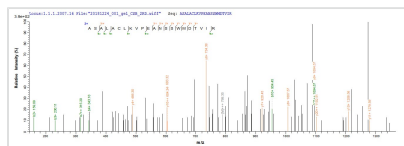
Partial

**Image**


(Tris-Glycine gel) Discontinuous SDS-PAGE (reduced) with 5% enrichment gel and 15% separation gel.



Based on the SEQUEST from database of E.coli host and target protein, the LC-MS/MS Analysis result of CSB-EP006926HU could indicate that this peptide derived from E.coli-expressed Homo sapiens (Human) DLAT.



Based on the SEQUEST from database of E.coli host and target protein, the LC-MS/MS Analysis result of CSB-EP006926HU could indicate that this peptide derived from E.coli-expressed Homo sapiens (Human) DLAT.

**Reconstitution**

We recommend that this vial be briefly centrifuged prior to opening to bring the contents to the bottom. Please reconstitute protein in deionized sterile water to a concentration of 0.1-1.0 mg/mL. We recommend to add 5-50% of glycerol (final concentration) and aliquot for long-term storage at -20°C/-80°C. Our default final concentration of glycerol is 50%. Customers could use it as reference.

**Shelf Life**

The shelf life is related to many factors, storage state, buffer ingredients, storage temperature and the stability of the protein itself. Generally, the shelf life of liquid form is 6 months at -20°C/-80°C. The shelf life of lyophilized form is 12 months at -20°C/-80°C.