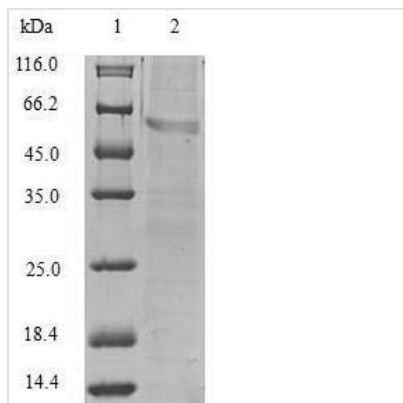




Recombinant Human Vimentin (VIM)

Product Code	CSB-EP025857HU
Relevance	Vimentins are class-III intermediate filaments found in various non-epithelial cells, especially mesenchymal cells. Vimentin is attached to the nucleus, endoplasmic reticulum, and mitochondria, either laterally or terminally.
Abbreviation	Recombinant Human VIM protein
Storage	The shelf life is related to many factors, storage state, buffer ingredients, storage temperature and the stability of the protein itself. Generally, the shelf life of liquid form is 6 months at -20°C/-80°C. The shelf life of lyophilized form is 12 months at -20°C/-80°C.
Uniprot No.	P08670
Product Type	Recombinant Protein
Immunogen Species	Homo sapiens (Human)
Purity	≥ 90% as determined by SDS-PAGE.
Sequence	STRSVSSSSYRRMFGGPGTASRPSSSSRSYVTTSTRTYSLGSALRPSTSRSLY ASSPGGVYATRSSAVRLRSSVPGVRLQLQDSVDFSLADAINTEFKNTRTNEKVE LQELNDRFANYIDKVRFLQEQNKILLAELEQLKGQGSRLGDLYEEEMRELRR QVDQLTNDKARVEVERDNLAEDIMRLREKLQEEMLRQEEAENTLQSFRQDVD NASLARLDLERKVESLQEEIAFLKKLHEEEIQELQAQIQEQHVQIDVDVSKPDLT AALRDVRRQQYESVAAKNLQEAEEWYKSKFADLSEAANRNNDALRQAKQESTE YRRQVQSLTCEVDALKGTNESLERQMREMEENFAVEAANYQDTIGRLQDEIQ NMKEEMARHLREYQDLLNVKMALDIEIATYRKLLEGEESRISLPLPNFSSLNLR ETNLDSLPLVDTHSKRLLIKTVETRDGQVINETSQHHDDLE
Research Area	Cancer
Source	E.coli
Target Names	VIM
Expression Region	2-466aa
Notes	Repeated freezing and thawing is not recommended. Store working aliquots at 4°C for up to one week.
Tag Info	N-terminal 6xHis-tagged
Mol. Weight	57.5kDa
Protein Length	Full Length of Mature Protein
Image	



(Tris-Glycine gel) Discontinuous SDS-PAGE (reduced) with 5% enrichment gel and 15% separation gel.

Reconstitution

We recommend that this vial be briefly centrifuged prior to opening to bring the contents to the bottom. Please reconstitute protein in deionized sterile water to a concentration of 0.1-1.0 mg/mL. We recommend to add 5-50% of glycerol (final concentration) and aliquot for long-term storage at -20°C/-80°C. Our default final concentration of glycerol is 50%. Customers could use it as reference.

Shelf Life

The shelf life is related to many factors, storage state, buffer ingredients, storage temperature and the stability of the protein itself. Generally, the shelf life of liquid form is 6 months at -20°C/-80°C. The shelf life of lyophilized form is 12 months at -20°C/-80°C.